

Recombinant Human CDH1 protein, Fc-tagged

Cat. No. CDH1-275H **Lot. No.** (See product label)

SPECIFICATION

Product Overview	Recombinant Human CDH1 protein (Gln23-Pro621), fused to human IgG1 Fc tag at C-terminus, was expressed in human 293 cells (HEK293).
Species	Human
Source	HEK293
ProteinLength	599
Description	<p>Cadherins are calcium-dependent cell adhesion proteins. They preferentially interact with themselves in a homophilic manner in connecting cells; cadherins may thus contribute to the sorting of heterogeneous cell types. Cadherin-1 (CDH1) is also known as epithelial cadherin (E-cadherin), CD_antigen (CD324), Uvomorulin (UVO) ECAD and CDHE, CDH1/CD324 contains 5 cadherin domains. CDH1 /CD324/ECAD is expressed in non-neural epithelial tissues. CDH1/E-CAD is involved in mechanisms regulating cell-cell adhesions, mobility and proliferation of epithelial cells and has a potent invasive suppressor role. It is a ligand for integrin alpha-E/beta-7. E-Cad promotes non-amyloidogenic degradation of Abeta precursors and has a strong inhibitory effect on APP C99 and C83 production. Defects in CDH1/CD324/ECAD are the cause of hereditary diffuse gastric cancer (HDGC).</p>
Form	Lyophilized from 0.22 um filtered solution in 50 mM Tris, 100 mM Glycine, pH7.5, 10% trehalose.
Molecular Mass	The protein has a calculated MW of 92.4 kDa. The protein migrates as 100 kDa and

 Tel: 1-631-559-9269 1-516-512-3133

 Email: info@creative-biomart.com  Fax: 1-631-938-8127

 45-1 Ramsey Road, Shirley, NY 11967, USA

	120 kDa Cadherin, a 48 kDa Propeptide under reducing (R) condition (SDS-PAGE) due to different glycosylation.
Endotoxin	Less than 1.0 EU per ug by the LAL method.
Purity	>95% as determined by SDS-PAGE.
Storage	<p>For long term storage, the product should be stored at lyophilized state at -20 centigrade or lower.</p> <p>Please avoid repeated freeze-thaw cycles.</p> <p>This product is stable after storage at:</p> <p>-20 centigrade to -70 centigrade for 12 months in lyophilized state; -70 centigrade for 3 months under sterile conditions after reconstitution.</p>
Reconstitution	It is recommended that sterile water be added to the vial to prepare a stock solution of 0.2 ug/ul. Centrifuge the vial at 4°C before opening to recover the entire contents.

GENE INFORMATION

Gene Name	CDH1
Official Symbol	CDH1
Synonyms	CDH1; cadherin 1, type 1, E-cadherin (epithelial); UVO; cadherin-1; CD324; E Cadherin; uvomorulin; CAM 120/80; E-Cadherin; cell-CAM 120/80; epithelial cadherin; cadherin 1, E-cadherin (epithelial); calcium-dependent adhesion protein, epithelial; CDHE; ECAD; LCAM; Arc-1
Gene ID	999
mRNA Refseq	NM_004360

 Tel: 1-631-559-9269 1-516-512-3133

 Email: info@creative-biomart.com  Fax: 1-631-938-8127

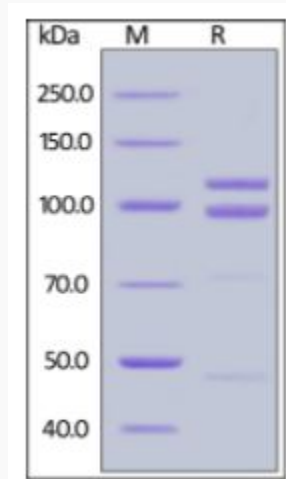
 45-1 Ramsey Road, Shirley, NY 11967, USA

Protein Refseq NP_004351

MIM 192090

UniProt ID P12830

SDS-PAGE of CDH1-275H



Human E-Cadherin, Fc Tag on SDS-PAGE under reducing (R) condition. The gel was stained overnight with Coomassie Blue. The purity of the protein is greater than 95%.

 Tel: 1-631-559-9269 1-516-512-3133

 Email: info@creative-biomart.com  Fax: 1-631-938-8127

 45-1 Ramsey Road, Shirley, NY 11967, USA