

Recombinant Human CDH1 protein, His & S-tagged

Cat. No. CDH1-579H Lot. No. (See product label)

SPECIFICATION

Product Overview Recombinant Human CDH1 (P12830) aa. (Pro373~Pro621) fused with N-terminal His & S tag was produced in E. coli cells.

Species Human


Source E.coli

ProteinLength Pro373~Pro621


Description This gene encodes a classical cadherin of the cadherin superfamily. Alternative splicing results in multiple transcript variants, at least one of which encodes a preproprotein that is proteolytically processed to generate the mature glycoprotein. This calcium-dependent cell-cell adhesion protein is comprised of five extracellular cadherin repeats, a transmembrane region and a highly conserved cytoplasmic tail. Mutations in this gene are correlated with gastric, breast, colorectal, thyroid and ovarian cancer. Loss of function of this gene is thought to contribute to cancer progression by increasing proliferation, invasion, and/or metastasis. The ectodomain of this protein mediates bacterial adhesion to mammalian cells and the cytoplasmic domain is required for internalization. This gene is present in a gene cluster with other members of the cadherin family on chromosome 16.

Form Freeze-dried powder

Molecular Mass Predicted Molecular Mass: 33.1kDa

 Tel: 1-631-559-9269 1-516-512-3133

 Email: info@creative-biomart.com  Fax: 1-631-938-8127

 45-1 Ramsey Road, Shirley, NY 11967, USA

Endotoxin	<1.0EU per 1g (determined by the LAL method)
Purity	> 95%
Characteristic	The isoelectric point is 4.5.
Applications	SDS-PAGE; WB; ELISA; IP.
Stability	The thermal stability is described by the loss rate. The loss rate was determined by accelerated thermal degradation test, that is, incubate the protein at 37°C for 48h, and no obvious degradation and precipitation were observed. The loss rate is less than 5% within the expiration date under appropriate storage condition.
Storage	Avoid repeated freeze/thaw cycles. Store at 2-8°C for one month. Aliquot and store at -80°C for 12 months.
Storage buffer	PBS, pH7.4, containing 5% sucrose, 0.01% sarcosyl.
Reconstitution	Reconstitute in sterile PBS, pH7.2-pH7.4

GENE INFORMATION

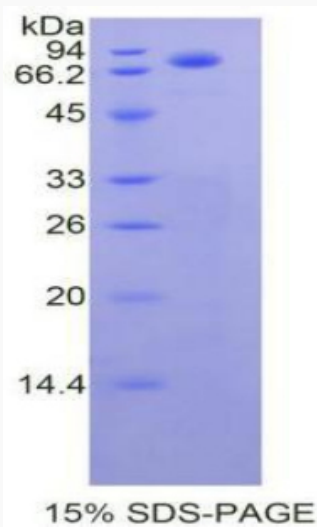
Gene Name	CDH1 cadherin 1 [Homo sapiens (human)]
Official Symbol	CDH1
Synonyms	CDH1; cadherin 1; UVO; CDHE; ECAD; LCAM; Arc-1; CD324; cadherin-1; CAM 120/80; E-cadherin 1; cadherin 1, E-cadherin (epithelial); cadherin 1, type 1, E-cadherin (epithelial); calcium-dependent adhesion protein, epithelial; cell-CAM 120/80; epithelial cadherin; uvomorulin


 Tel: 1-631-559-9269 1-516-512-3133

 Email: info@creative-biomart.com  Fax: 1-631-938-8127

 45-1 Ramsey Road, Shirley, NY 11967, USA

Gene ID	999
mRNA Refseq	NM_001317184.1
Protein Refseq	NP_001304113.1
UniProt ID	P12830

SDS-PAGE

 Tel: 1-631-559-9269 1-516-512-3133

 Email: info@creative-biomart.com  Fax: 1-631-938-8127

 45-1 Ramsey Road, Shirley, NY 11967, USA