

Recombinant Human Cadherin 1, Type 1, E-cadherin (Epithelial)

Cat. No. CDH1-86H **Lot. No.** (See product label)

SPECIFICATION

Product Overview	Recombinant Human Cadherin-E protein 600-707 a.a. expressed in <i>E.coli</i> , 38 kDa.
Species	Human
Source	<i>E.coli</i>
Protein Length	600-707 a.a.
Description	E-cadherin (uvomorulin, cell-CAM120/80) is a calcium dependent cell adhesion molecule expressed predominately in epithelial tissues. It plays an important role in the growth and development of cells via the mechanisms of control of tissue architecture and the maintenance of tissue integrity. Numerous studies have demonstrated that reduction and/or loss of Ecadherin expression in carcinomas correlates positively with the potential of these tumors for invasion and metastasis.
Sequence	iffcernpkpq viniidadlp pntspftael thgasanwti qyndptqesi ilkpkmalev gdykinlklm dnqnkdvtt levsacdceg aagvcrkaqp veaglqi
Presentation	Recombinant Human Cadherin-E protein at 2g/20µl in 50mM Tris-Acetate, pH7.5, 1mM EDTA and 20% Glycerol.
Characterization	On SDS-PAGE commassie blue stained gel, the purified recombinant protein shows a band at 38 kDa.

 Tel: 1-631-559-9269 1-516-512-3133

 Email: info@creative-biomart.com  Fax: 1-631-938-8127

 45-1 Ramsey Road, Shirley, NY 11967, USA

Applications •ELISA •Inhibition Assays •Western Blotting

Storage

Store vial at -20°C to -80°C. When stored at the recommended temperature, this protein is stable for 12 months.

GENE INFORMATION

Gene Name

CDH1 cadherin 1, type 1, E-cadherin (epithelial) [Homo sapiens]

Synonyms

CDH1; cadherin 1, type 1, E-cadherin (epithelial); UVO; CDHE; ECAD; LCAM; Arc-1; CD324; cadherin 1, type 1; uvomorulin; cell-CAM 120/80; cadherin 1, E-cadherin (epithelial); calcium-dependent adhesion protein, epithelial; uvomorulin; Cadherin-1; E-cadherin; CAM 120/80; E-Cad/CTF1; E-Cad/CTF2; E-Cad/CTF3; Uvomorulin; CD324 antigen; Epithelial cadherin

Gene ID

999

mRNA Refseq

NM_004360

Protein Refseq

NP_004351

MIM

192090

UniProt ID

P12830

Chromosome Location

16q22.1

Pathway

Adherens junction; Bladder cancer; Cell adhesion molecules (CAMs); Endometrial cancer; Melanoma; Pathogenic Escherichia coli infection - EHEC; Pathways in cancer; Thyroid cancer; Apoptosis; Cell-cell adhesion systems; Integrin cell surface

 Tel: 1-631-559-9269 1-516-512-3133

 Email: info@creative-biomart.com  Fax: 1-631-938-8127

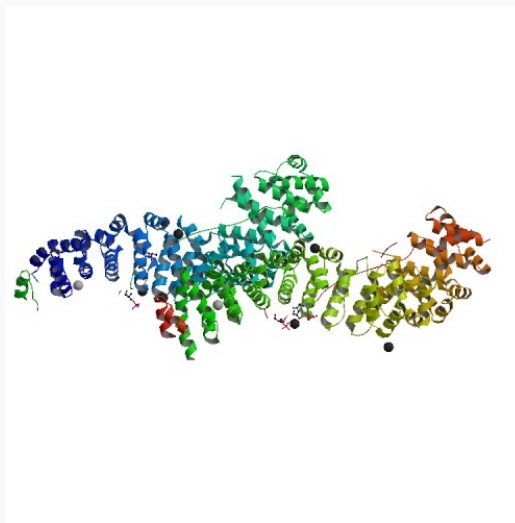
 45-1 Ramsey Road, Shirley, NY 11967, USA


interactions; Signaling in Immune system

Function


RPTP-like protein binding; beta-catenin binding; calcium ion binding; cell adhesion molecule binding; protein phosphatase binding; transcription activator activity

PDB rendering based on 1i7w.



 Tel: 1-631-559-9269 1-516-512-3133

 Email: info@creative-biomart.com  Fax: 1-631-938-8127

 45-1 Ramsey Road, Shirley, NY 11967, USA