

## Recombinant Human CDH11 Protein, GST-Tagged

Cat. No. CDH11-0972H Lot. No. (See product label)

### SPECIFICATION

<b>Product Overview</b>	Human CDH11 partial ORF (NP_001788, 509 a.a. - 617 a.a.) recombinant protein with GST-tag at N-terminal.
<b>Species</b>	Human
<b>Source</b>	Wheat Germ
<b>Description</b>	This gene encodes a type II classical cadherin from the cadherin superfamily, integral membrane proteins that mediate calcium-dependent cell-cell adhesion. Mature cadherin proteins are composed of a large N-terminal extracellular domain, a single membrane-spanning domain, and a small, highly conserved C-terminal cytoplasmic domain. Type II (atypical) cadherins are defined based on their lack of a HAV cell adhesion recognition sequence specific to type I cadherins. Expression of this particular cadherin in osteoblastic cell lines, and its upregulation during differentiation, suggests a specific function in bone development and maintenance. [provided by RefSeq, Jul 2008]
<b>Molecular Mass</b>	37.73 kDa
<b>AA Sequence</b>	PIVTISADDKDDTANGPRFIFSLPPEIIHNPNTVTRDNRDNTAGVYARRGGFSRQKQD LYLLPIVISDGGIPMSSTNTLTIKVCGCDVNGALLSCNAEAYILNAGLST
<b>Applications</b>	Enzyme-linked Immunoabsorbent Assay Western Blot (Recombinant protein) Antibody Production

 Tel: 1-631-559-9269 1-516-512-3133

 Email: [info@creative-biomart.com](mailto:info@creative-biomart.com)  Fax: 1-631-938-8127

 45-1 Ramsey Road, Shirley, NY 11967, USA

**Protein Array**

**Storage** Store at -80 centigrade. Aliquot to avoid repeated freezing and thawing.

**Storage Buffer** 50 mM Tris-HCl, 10 mM reduced Glutathione, pH=8.0 in the elution buffer.

**GENE INFORMATION**

**Gene Name** CDH11 cadherin 11, type 2, OB-cadherin (osteoblast) [ Homo sapiens ]

**Official Symbol** CDH11

**Synonyms** CDH11; cadherin 11, type 2, OB-cadherin (osteoblast); cadherin-11; CAD11; OB; OB Cadherin; CDHOB; OSF-4;

**Gene ID** 1009

**mRNA Refseq** NM\_001797

**Protein Refseq** NP\_001788

**MIM** 600023

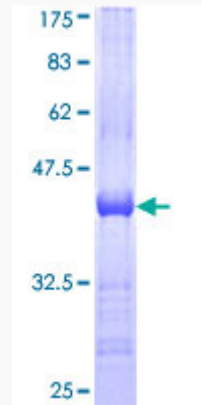
**UniProt ID** P55287

 Tel: 1-631-559-9269 1-516-512-3133

 Email: [info@creative-biomart.com](mailto:info@creative-biomart.com)  Fax: 1-631-938-8127

 45-1 Ramsey Road, Shirley, NY 11967, USA

**Quality Control  
Testing**



12.5% SDS-PAGE Stained with Coomassie Blue.

 Tel: 1-631-559-9269 1-516-512-3133

 Email: [info@creative-biomart.com](mailto:info@creative-biomart.com)  Fax: 1-631-938-8127

 45-1 Ramsey Road, Shirley, NY 11967, USA