

# Recombinant Human CDH11 Protein (Phe23-Thr617), C-Fc and His tagged

Cat. No. CDH11-1330H Lot. No. (See product label)

## SPECIFICATION

<b>Product Overview</b>	Recombinant human CDH11 (Phe23-Thr617) fused with the C-terminal Fc and His Tag was expressed in Mammalian cells.
<b>Species</b>	Human
<b>Source</b>	Mammalian Cells
<b>ProteinLength</b>	Phe23-Thr617
<b>Form</b>	Lyophilized powder/frozen liquid
<b>Molecular Mass</b>	90.45 kDa
<b>Purity</b>	>90% as determined by SDS-PAGE.
<b>Notes</b>	For research use only.
<b>Storage</b>	Use a manual defrost freezer and avoid repeated freeze thaw cycles. Store at 2 to 8 centigrade for one week. Store at -20 to -80 centigrade for twelve months from the date of receipt.
<b>Storage Buffer</b>	Supplied as solution form in PBS or lyophilized from PBS.
<b>Reconstitution</b>	Reconstitute in sterile water for a stock solution.

 Tel: 1-631-559-9269 1-516-512-3133

 Email: [info@creative-biomart.com](mailto:info@creative-biomart.com)  Fax: 1-631-938-8127

 45-1 Ramsey Road, Shirley, NY 11967, USA

**Shipping**

They are shipped out with dry ice/blue ice unless customers require otherwise.

**GENE INFORMATION****Gene Name**

CDH11 cadherin 11, type 2, OB-cadherin (osteoblast) [ Homo sapiens (human) ]

**Official Symbol**

CDH11

**Synonyms**

CDH11; cadherin 11, type 2, OB-cadherin (osteoblast); cadherin-11; CAD11; OB; OB Cadherin; CDHOB; OSF-4;

**Gene ID**

1009

**mRNA Refseq**

NM\_001797

**Protein Refseq**

NP\_001788

**MIM**

600023

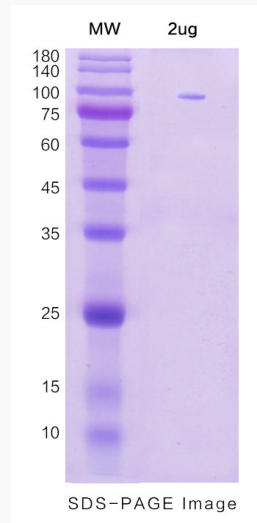
**UniProt ID**

P55287

 Tel: 1-631-559-9269 1-516-512-3133 Email: [info@creative-biomart.com](mailto:info@creative-biomart.com)  Fax: 1-631-938-8127 45-1 Ramsey Road, Shirley, NY 11967, USA



**SDS-PAGE**



Tel: 1-631-559-9269 1-516-512-3133

Email: [info@creative-biomart.com](mailto:info@creative-biomart.com) Fax: 1-631-938-8127

45-1 Ramsey Road, Shirley, NY 11967, USA