

Recombinant Human CDH12 Protein (Phe421-Lys535), N-His tagged

Cat. No. CDH12-1311H Lot. No. (See product label)

SPECIFICATION

Product Overview	Recombinant Human CDH12 (Phe421-Lys535) fused with the N-His tag was expressed in E. coli.
Species	Human
Source	E.coli
ProteinLength	Phe421-Lys535
Form	Lyophilized powder/frozen liquid
Molecular Mass	14.89 kDa
Purity	>90% as determined by SDS-PAGE.
Notes	For research use only.
Storage	Use a manual defrost freezer and avoid repeated freeze thaw cycles. Store at 2 to 8 centigrade for one week. Store at -20 to -80 centigrade for twelve months from the date of receipt.
Storage Buffer	0.01M PBS, pH 7.4, 0.02% NLS
Reconstitution	Reconstitute in sterile water for a stock solution.

 Tel: 1-631-559-9269 1-516-512-3133

 Email: info@creative-biomart.com  Fax: 1-631-938-8127

 45-1 Ramsey Road, Shirley, NY 11967, USA

Shipping

They are shipped out with dry ice/blue ice unless customers require otherwise.

GENE INFORMATION
Gene Name

CDH12 cadherin 12, type 2 (N-cadherin 2) [Homo sapiens (human)]

Official Symbol

CDH12

Synonyms

CDH12; cadherin 12, type 2 (N-cadherin 2); cadherin-12; Br cadherin; CDHB; Br-cadherin; N-cadherin 2; brain cadherin; brain-cadherin; neuronal cadherin 2; neural type cadherin 2; cadherin, neural type, 2; FLJ34857;

Gene ID

1010

mRNA Refseq

NM_004061

Protein Refseq

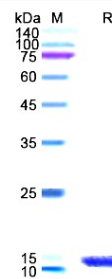
NP_004052

MIM

600562

UniProt ID

P55289

SDS-PAGE


 Tel: 1-631-559-9269 1-516-512-3133

 Email: info@creative-biomart.com  Fax: 1-631-938-8127

 45-1 Ramsey Road, Shirley, NY 11967, USA