

Recombinant Human CDH13 Protein, GST-Tagged

Cat. No. CDH13-0975H Lot. No. (See product label)

SPECIFICATION

Product Overview	Human CDH13 full-length ORF (AAH30653, 1 a.a. - 713 a.a.) recombinant protein with GST-tag at N-terminal.
Species	Human
Source	Wheat Germ
Description	This gene encodes a member of the cadherin superfamily. The encoded protein is localized to the surface of the cell membrane and is anchored by a GPI moiety, rather than by a transmembrane domain. The protein lacks the cytoplasmic domain characteristic of other cadherins, and so is not thought to be a cell-cell adhesion glycoprotein. This protein acts as a negative regulator of axon growth during neural differentiation. It also protects vascular endothelial cells from apoptosis due to oxidative stress, and is associated with resistance to atherosclerosis. The gene is hypermethylated in many types of cancer. Alternative splicing results in multiple transcript variants encoding different isoforms. [provided by RefSeq, May 2011]
Molecular Mass	104.17 kDa
AA Sequence	MQPRTPLVLCVLLSQVLLLTSAEDLDCTPGFQQKVFHINQPAEFIEDQSILNLTFSDC KGNDKLRYEVSPPYFKVNSDGGGLVALRNITAVGKTLFVHARTPHAEDMAELVIVGGK DIQGS LQDIFKFARTSPVPRQKRSIVVSPILIPENQRQPFPRDVGKVVDSDRPERSKF RLTGKGV DQEPKGFIRINENTGSVSMTRTLDREVI AVYQLFVETTDVNGKTLEGPVP LEVIVIDQNDNRPIFREGPYIGHVMEGSPTGTTVMRMTAFDADDPATDNALLRYNIRR

 Tel: 1-631-559-9269 1-516-512-3133

 Email: info@creative-biomart.com  Fax: 1-631-938-8127

 45-1 Ramsey Road, Shirley, NY 11967, USA

QTPDKPSPNMFYIDPEKGDIVTVVSPALLDRETLENPKYELIIEAQDMAGLDVGLTGT
 ATATIMIDDKNDHSPKFTKKEFQATVEEGAVGVIVNLTVEDKDDPATGAWRAAYTIIN
 GNPQGSFEIHTNPQTNEGMLSVVKPLDYEISAFHTLLIKVENEDPLVPDVSYGPSSTA
 TVHITVLDVNEGPVFYPDPMMVTRQEDLSVGSVLLTVNATDPDSLQHQQTIRYSVYKD
 PAGWLNINPINGTVDTTAVLDRESTFVDNSVYTALFLAIDSGNPPATGTGTLITLEDV
 NDNAPFIYPTVAEVCDDAKNLSVVILGASDKDLHPNTDPFKFEIHKQAVPDKVWKISK
 INNTHALVSLQLNLKANYNLPIMVTDSGKPPMTNITDLRVQVCSCRNSKVDCNAAG
 ALRFSLPSVLLLSLFLACL

Applications

Enzyme-linked Immunoabsorbent Assay
 Western Blot (Recombinant protein)
 Antibody Production
 Protein Array

Storage

Store at -80 centigrade. Aliquot to avoid repeated freezing and thawing.

Storage Buffer

50 mM Tris-HCl, 10 mM reduced Glutathione, pH=8.0 in the elution buffer.

GENE INFORMATION

Gene Name

CDH13 cadherin 13, H-cadherin (heart) [Homo sapiens]

Official Symbol

CDH13

Synonyms

CDH13; cadherin 13, H-cadherin (heart); cadherin-13; CDHH; T cadherin; T-cad; H-cadherin; T-cadherin; heart cadherin; P105;

Gene ID

1012

mRNA Refseq

NM_001220488

 Tel: 1-631-559-9269 1-516-512-3133

 Email: info@creative-biomart.com  Fax: 1-631-938-8127

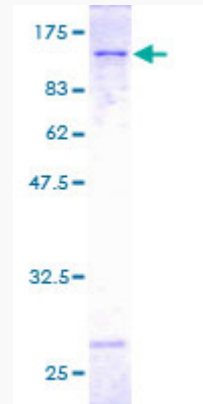
 45-1 Ramsey Road, Shirley, NY 11967, USA

Protein Refseq NP_001207417

MIM 601364

UniProt ID P55290

**Quality Control
Testing**



12.5% SDS-PAGE Stained with Coomassie Blue.

 Tel: 1-631-559-9269 1-516-512-3133

 Email: info@creative-biomart.com  Fax: 1-631-938-8127

 45-1 Ramsey Road, Shirley, NY 11967, USA