

## Recombinant Human CDH16 Protein, GST-Tagged

Cat. No. CDH16-0976H Lot. No. (See product label)

### SPECIFICATION

<b>Product Overview</b>	Human CDH16 full-length ORF (NP_004053.1, 1 a.a. - 829 a.a.) recombinant protein with GST-tag at N-terminal.
<b>Species</b>	Human
<b>Source</b>	Wheat Germ
<b>Description</b>	<p>This gene is a member of the cadherin superfamily, genes encoding calcium-dependent, membrane-associated glycoproteins. Mapped to a previously identified cluster of cadherin genes on chromosome 16q22.1, the gene localizes with superfamily members CDH1, CDH3, CDH5, CDH8 and CDH11. The protein consists of an extracellular domain containing 6 cadherin domains, a transmembrane region and a truncated cytoplasmic domain but lacks the prosequence and tripeptide HAV adhesion recognition sequence typical of most classical cadherins. Expression is exclusively in kidney, where the protein functions as the principal mediator of homotypic cellular recognition, playing a role in the morphogenic direction of tissue development. Alternatively spliced transcript variants encoding distinct isoforms have been identified. [provided by RefSeq, Mar 2011]</p>
<b>Molecular Mass</b>	116.3 kDa
<b>AA Sequence</b>	<p>MVPAWLWLLCVSVPQALPKAQPAELSVPEVNYGGNFPLYLTKLPLPREGAEGQIV            LSGDSGKATEGPFAMDPDSGFLVTRALDREEQAEYQLQVTLEMQDGHVWLWGPQP            VLVHVKDENDQVPHFSQAIYRARLSRGTRPGIPFLFLEASDRDEPGTANSDLRFHILS</p>

 Tel: 1-631-559-9269 1-516-512-3133

 Email: [info@creative-biomart.com](mailto:info@creative-biomart.com)  Fax: 1-631-938-8127

 45-1 Ramsey Road, Shirley, NY 11967, USA

QAPAQSPDMFQLEPRLGALALSPKGSTSLDHALERTYQLLVQVKDMGDQASGHQ  
 ATATVEVSIIESTWWSLEPIHLAENLKVLYPHHMAQVHWSGGDVHYHLESHPPGPFE  
 VNAEGLNYVTRELDREAQAEYLLQVRAQNSHGEDIAAPLELHVLVMDENDNVPICP  
 PRDPTVSIPELSPPGTEVTRLSAEDADAPGSPNSHVYQLLSPEPEDGVEGRAFQV  
 DPTSGSVTLGVLPLRAGQNILLVLAMDLAGAEGGFSSTCEVEVAVTDINDHAPEFIT  
 SQIGPISLPEDVEPGTLVAMLTADADLEPAFRLMDFAIERGDTEGTFGLDWEPDSGH  
 VRLRLCKNLSYEAAPSHEVVVVVQSVAKLVGPGPGGATATVTVLVERVMPPPCLD  
 QESYEASVPISAPAGSFLLTIQPSDPISRTLRFSLVNDSEGWLCIEKFSGEVHTAQSL  
 QGAQPGDTYTVLVEAQDTDEPRLSASAPLVIHFLKAPPAPALTLAPVPSQYLCTPRQ  
 DHGLIVSGPSKDPDLASGHGYPYSFTLGNPTVQRDWRLQTLNGSHAYLTLALHWVE  
 PREHIIPVVVSHNAQMWQLLVRVIVCRCNVEGQCMRKVGRMKGMPTKLSAVGILVG  
 TLVAIGIFLILIFTHWTMSRKKDPDQPADSVPLKATV

**Applications**

Enzyme-linked Immunoabsorbent Assay  
 Western Blot (Recombinant protein)  
 Antibody Production  
 Protein Array

**Storage**

Store at -80 centigrade. Aliquot to avoid repeated freezing and thawing.

**Storage Buffer**

50 mM Tris-HCl, 10 mM reduced Glutathione, pH=8.0 in the elution buffer.

## GENE INFORMATION

**Gene Name**

CDH16 cadherin 16, KSP-cadherin [ [Homo sapiens](#) ]

**Official Symbol**

CDH16

**Synonyms**

CDH16; cadherin 16, KSP-cadherin; cadherin-16; KSP-cadherin; kidney-specific cadherin;

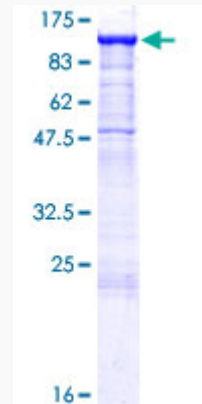
 Tel: 1-631-559-9269 1-516-512-3133

 Email: [info@creative-biomart.com](mailto:info@creative-biomart.com)  Fax: 1-631-938-8127

 45-1 Ramsey Road, Shirley, NY 11967, USA

Gene ID	1014
mRNA Refseq	NM_001204744
Protein Refseq	NP_001191673
MIM	603118
UniProt ID	O75309

**Quality Control  
Testing**



12.5% SDS-PAGE Stained with Coomassie Blue.

 Tel: 1-631-559-9269 1-516-512-3133

 Email: [info@creative-biomart.com](mailto:info@creative-biomart.com)  Fax: 1-631-938-8127

 45-1 Ramsey Road, Shirley, NY 11967, USA