

Recombinant Human CDH16 protein, His & T7-tagged

Cat. No. CDH16-2090H Lot. No. (See product label)

SPECIFICATION

Product Overview	Recombinant Human CDH16 aa. (Phe37~Asn287 (Accession # O75309)) fused with N-terminal His & T7 tag was produced in E. coli cells.
Species	Human
Source	E.coli
ProteinLength	Phe37~Asn287
Form	Freeze-dried powder
Molecular Mass	Predicted Molecular Mass: 31.5kDa
Endotoxin	<1.0EU per 1ug (determined by the LAL method)
Purity	>95%
Characteristic	The isoelectric point is 5.6.
Applications	SDS-PAGE; WB; ELISA; IP.
Stability	The thermal stability is described by the loss rate of the target protein. The loss rate was determined by accelerated thermal degradation test, that is, incubate the protein at 37°C for 48h, and no obvious degradation and precipitation were observed. (Referring from China Biological Products Standard, which was calculated by the

 Tel: 1-631-559-9269 1-516-512-3133

 Email: info@creative-biomart.com  Fax: 1-631-938-8127

 45-1 Ramsey Road, Shirley, NY 11967, USA

Arrhenius equation.) The loss of this protein is less than 5% within the expiration date under appropriate storage condition.

Storage

Avoid repeated freeze/thaw cycles. Store at 2-8°C for one month. Aliquot and store at -80°C for 12 months.

Storage Buffer

Supplied as lyophilized form in PBS, pH7.4, containing 5% sucrose, 0.01% sarcosyl.

Reconstitution

Reconstitute in sterile PBS, pH7.2-pH7.4.

GENE INFORMATION

Gene Name

CDH16 cadherin 16 [Homo sapiens (human)]

Official Symbol

CDH16

Synonyms

KIR2DL5A; killer cell immunoglobulin like receptor, two Ig domains and long cytoplasmic tail 5A; CD158F; KIR2DL5; KIR2DL5.1; KIR2DL5.3; killer cell immunoglobulin-like receptor 2DL5A; killer cell immunoglobulin-like receptor KIR2DL5A; killer cell immunoglobulin-like receptor, two domains, long cytoplasmic tail, 5; killer cell immunoglobulin-like receptor, two domains, long cytoplasmic tail, 5A

Gene ID

1014

mRNA Refseq

NM_001204744.1

Protein Refseq

NP_001191673.1

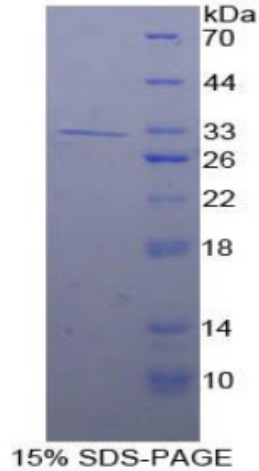
UniProt ID

O75309

 Tel: 1-631-559-9269 1-516-512-3133

 Email: info@creative-biomart.com  Fax: 1-631-938-8127

 45-1 Ramsey Road, Shirley, NY 11967, USA



SDS-PAGE

 Tel: 1-631-559-9269 1-516-512-3133

 Email: info@creative-biomart.com  Fax: 1-631-938-8127

 45-1 Ramsey Road, Shirley, NY 11967, USA