

Recombinant Human CDH16 Protein, Myc/DDK-tagged, C13 and N15-labeled

Cat. No. CDH16-2982H **Lot. No.** (See product label)

SPECIFICATION

Product Overview	CDH16 MS Standard C13 and N15-labeled recombinant protein (NP_004053) with a C-terminal MYC/DDK tag, was expressed in HEK293 cells.
Species	Human
Source	HEK293
Description	<p>This gene is a member of the cadherin superfamily, genes encoding calcium-dependent, membrane-associated glycoproteins. Mapped to a previously identified cluster of cadherin genes on chromosome 16q22.1, the gene localizes with superfamily members CDH1, CDH3, CDH5, CDH8 and CDH11. The protein consists of an extracellular domain containing 6 cadherin domains, a transmembrane region and a truncated cytoplasmic domain but lacks the prosequence and tripeptide HAV adhesion recognition sequence typical of most classical cadherins. Expression is exclusively in kidney, where the protein functions as the principal mediator of homotypic cellular recognition, playing a role in the morphogenic direction of tissue development. Alternatively spliced transcript variants encoding distinct isoforms have been identified.</p>
Molecular Mass	89.92 kDa
AA Sequence	MVPAWLWLLCVSVPQALPKAQAELSVEVPENYGGNFPLYLTKLPLPREGAEGQIV LSGDSGKATEGPFAMDPDSGFLVTRALDREEQAEYQLQVTLEMQDGHVWGPQP

 Tel: 1-631-559-9269 1-516-512-3133

 Email: info@creative-biomart.com  Fax: 1-631-938-8127

 45-1 Ramsey Road, Shirley, NY 11967, USA



VLVHVKDENDQVPHFSQAIYRARLSRGTRPGIPFLFLEASDRDEPGTANSDLRFHILS
 QAPAQPSPDMFQLEPRLGALALSPKGSTSLDHALERTYQLLVQVKDMGDQASGHQ
 ATATVEVSIIESTWVSLEPIHLAENLKVLYPHHMAQVHWSSGGDVHYHLESHPPGPFE
 VNAEGLNYVTRELDREAQAEYLLQVRAQNSHGEDYAAPLELHVLVMDENDNVPICP
 PRDPTVSIPELSPPGTEVTRLSAEDADAPGSPNSHVYQLLSPEPEDGVEGRAFQV
 DPTSGSVTLGLVPLRAGQNILLVLAMDLAGAEGGFSSTCEVEVAVTDINDHAPEFIT
 SQIGPISLPEDVEPGTLVAMLTADADLEPAFRLMDFAIERGDTEGTFGLDWEPDSGH
 VRLRLCKNLSYEAAPSHEVVVVVQSVAKLVGPGPGGATATVTVLVERVMPPPCLD
 QESYEASVPISAPAGSFLTIQPSDPISRTLRFSLVNDSEGWLCIEKFSGEVHTAQSL
 QGAQPGDTYTVLVEAQDTDEPRLSASAPLVIHFLKAPPAPALTLAPVPSQYLCTPRQ
 DHGLIVSGPSKDPDLASGHGPYSFTLGNPTVQRDWRLQTLNGSHAYLTLALHWVE
 PREHIIPVVVSHNAQMWQLLVRVIVCRCNVEGQC MRKVGRMKGMPTKLSAVGILVG
 TLVAIGIFLILIFTHWTMSRKKDPDQPADSVPLKATVTRTRPLEQKLISEEDLAANDILD
 YKDDDDKV

Purity	> 80% as determined by SDS-PAGE and Coomassie blue staining
Stability	Stable for 3 months from receipt of products under proper storage and handling conditions.
Storage	Store at -80 centigrade. Avoid repeated freeze-thaw cycles.
Concentration	50 µg/mL as determined by BCA
Storage Buffer	100 mM glycine, 25 mM Tris-HCl, pH 7.3.

GENE INFORMATION

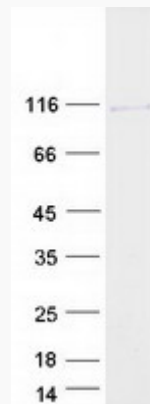
Gene Name	CDH16 cadherin 16 [Homo sapiens (human)]
Official Symbol	CDH16

Tel: 1-631-559-9269 1-516-512-3133

Email: info@creative-biomart.com Fax: 1-631-938-8127

45-1 Ramsey Road, Shirley, NY 11967, USA

Synonyms	CDH16; cadherin 16, KSP-cadherin; cadherin-16; KSP-cadherin; kidney-specific cadherin;
Gene ID	1014
mRNA Refseq	NM_004062
Protein Refseq	NP_004053
MIM	603118
UniProt ID	O75309

SDS-PAGE

 Tel: 1-631-559-9269 1-516-512-3133

 Email: info@creative-biomart.com  Fax: 1-631-938-8127

 45-1 Ramsey Road, Shirley, NY 11967, USA