

Active Recombinant Human CDH16 protein, N-His-tagged

Cat. No. CDH16-3076H Lot. No. (See product label)

SPECIFICATION

Product Overview	Active Recombinant Human CDH16 protein(O75309-1)(Lys19-Ala786) is expressed from HEK293 with His tag at the N-terminus.
Species	Human
Source	HEK293
ProteinLength	19-786 aa
Form	Lyophilized from 0.22 µm filtered solution in 50mM Tris, 100mM NaCl (pH 8.0).
Bio-activity	Immobilized Human CDH16, His Tag at 0.5µg/ml (100µl/well) on the plate. Dose response curve for Anti-CDH16 Antibody, Mouse IgG Tag with the EC50 of 16.8ng/ml determined by ELISA.
Molecular Mass	The protein has a predicted MW of MW 84.37 kDa. Due to glycosylation, the protein migrates to 90-110 kDa based on Bis-Tris PAGE result.
Endotoxin	Less than 1 EU per µg by the LAL method.
Purity	> 95% as determined by Bis-Tris PAGE
Storage	Store at -20 to -80°C for 12 months as supplied from date of receipt. -80°C for 3 months after reconstitution. Recommend to aliquot the protein into smaller quantities for optimal storage. Please minimize freeze-thaw cycles.

 Tel: 1-631-559-9269 1-516-512-3133

 Email: info@creative-biomart.com  Fax: 1-631-938-8127

 45-1 Ramsey Road, Shirley, NY 11967, USA

Reconstitution	Dissolve the lyophilized protein in distilled water.
protein Refseq-Weblink	http://www.ncbi.nlm.nih.gov/protein/NP_001191673.1
Unit ID	O75309
Unit ID-Weblink	http://www.uniprot.org/uniprot/O75309

GENE INFORMATION

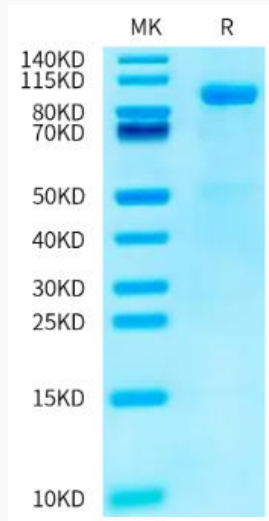
Gene Name	CDH16 cadherin 16, KSP-cadherin [Homo sapiens]
Official Symbol	CDH16
Synonyms	CDH16; cadherin 16, KSP-cadherin; cadherin-16; KSP-cadherin; kidney-specific cadherin;
Gene ID	1014
mRNA Refseq	NM_001204744
protein Refseq	NP_001191673
MIM	603118

 Tel: 1-631-559-9269 1-516-512-3133

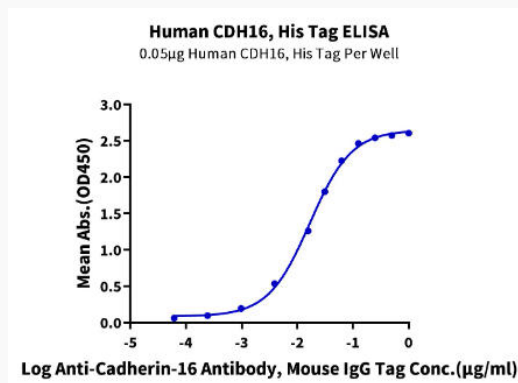
 Email: info@creative-biomart.com  Fax: 1-631-938-8127

 45-1 Ramsey Road, Shirley, NY 11967, USA

Bis-Tris PAGE



ELISA Data



 Tel: 1-631-559-9269 1-516-512-3133

 Email: info@creative-biomart.com  Fax: 1-631-938-8127

 45-1 Ramsey Road, Shirley, NY 11967, USA