

Active Recombinant Human CDH16 protein, C-His-tagged

Cat. No. CDH16-3860H Lot. No. (See product label)

SPECIFICATION

Product Overview	Active Recombinant Human CDH16 protein(NP_004053.1) (Met 1-Ala 786) was expressed in HEK293, fused with a polyhistidine tag at the C-terminus.
Species	Human
Source	HEK293
ProteinLength	1-786 aa
Form	Lyophilized from sterile PBS, pH 7.4.
Bio-activity	Measured by the ability of the immobilized protein to support the adhesion of MCF-7 human breast adenocarcinoma cells. When cells are added to CDH16-His coated plates (10 µg/mL, 100 µL/well), apximately 20-40% will adhere specifically after 60 minutes at 37 °C.
Molecular Mass	The recombinant human CDH16 comprises 779 amino acids and has a calculated molecular mass of 84.8 kDa. As a result of glycosylation, the recombinant protein migrates as an apximately 100 kDa protein in SDS-PAGE under reducing conditions.
Endotoxin	< 1.0 EU per µg of the protein as determined by the LAL method.
Purity	> 70 % as determined by SDS-PAGE
Storage	Store it under sterile conditions at -20°C to -80°C upon receiving. Recommend to

 Tel: 1-631-559-9269 1-516-512-3133

 Email: info@creative-biomart.com  Fax: 1-631-938-8127

 45-1 Ramsey Road, Shirley, NY 11967, USA

aliquot the protein into smaller quantities for optimal storage. Avoid repeated freeze-thaw cycles.

Reconstitution

It is recommended that sterile water be added to the vial to prepare a stock solution of 0.2 ug/ul. Centrifuge the vial at 4°C before opening to recover the entire contents.

protein Refseq-Weblink

http://www.ncbi.nlm.nih.gov/protein/NP_001191673.1

Unit ID

O75309

Unit ID-Weblink

<http://www.uniprot.org/uniprot/O75309>

GENE INFORMATION

Gene Name

CDH16 cadherin 16, KSP-cadherin [Homo sapiens]

Official Symbol

CDH16

Synonyms

CDH16; cadherin 16, KSP-cadherin; cadherin-16; KSP-cadherin; kidney-specific cadherin;

Gene ID

1014

mRNA Refseq

[NM_001204744](#)

protein Refseq

NP_001191673

MIM

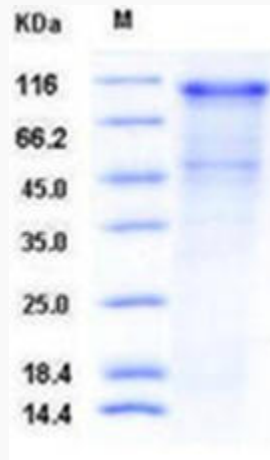
603118

 Tel: 1-631-559-9269 1-516-512-3133

 Email: info@creative-biomart.com  Fax: 1-631-938-8127

 45-1 Ramsey Road, Shirley, NY 11967, USA

SDS-PAGE



 Tel: 1-631-559-9269 1-516-512-3133

 Email: info@creative-biomart.com  Fax: 1-631-938-8127

 45-1 Ramsey Road, Shirley, NY 11967, USA