

Recombinant Human CDH17 Domain 4 protein, mFc-tagged

Cat. No. CDH17-1319H Lot. No. (See product label)

SPECIFICATION

| | |
|-------------------------|---|
| Product Overview | Recombinant Human CDH17 Domain 4 protein(Q12864)(Pro341-Phe449) is expressed from HEK293 with mFc (IgG2a) tag at the C-terminus. |
| Species | Human |
| Source | HEK293 |
| ProteinLength | 341-449 aa |
| Form | Lyophilized from 0.22 µm filtered solution in PBS (pH 7.4). Normally 8% trehalose is added as protectant before lyophilization. |
| Molecular Mass | The protein has a predicted MW of 38.78 kDa. Due to glycosylation, the protein migrates to 45-60 kDa based on Bis-Tris PAGE result. |
| Endotoxin | Less than 1 EU per µg by the LAL method. |
| Purity | > 95% as determined by Bis-Tris PAGE |
| Storage | -20 to -80°C for 12 months as supplied from date of receipt. -80°C for 3 months after reconstitution. Recommend to aliquot the protein into smaller quantities for optimal storage. Please minimize freeze-thaw cycles. |
| Reconstitution | Dissolve the lyophilized protein in distilled water. |

 Tel: 1-631-559-9269 1-516-512-3133

 Email: info@creative-biomart.com  Fax: 1-631-938-8127

 45-1 Ramsey Road, Shirley, NY 11967, USA

GENE INFORMATION

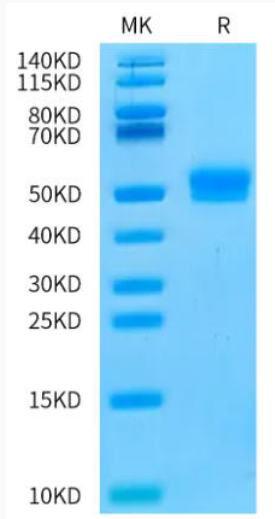
| | |
|------------------------|--|
| Gene Name | CDH17 cadherin 17, LI cadherin (liver-intestine) [Homo sapiens] |
| Official Symbol | CDH17 |
| Synonyms | CDH17; cadherin 17, LI cadherin (liver-intestine); cadherin-17; cadherin; HPT 1; LI cadherin; LI-cadherin; cadherin-16; HPT-1 cadherin; liver-intestine cadherin; human peptide transporter 1; intestinal peptide-associated transporter HPT-1; human intestinal peptide-associated transporter HPT-1; HPT1; CDH16; HPT-1; FLJ26931; MGC138218; MGC142024; |
| Gene ID | 1015 |
| mRNA Refseq | NM_001144663 |
| Protein Refseq | NP_001138135 |
| MIM | 603017 |
| UniProt ID | Q12864 |

 Tel: 1-631-559-9269 1-516-512-3133

 Email: info@creative-biomart.com  Fax: 1-631-938-8127

 45-1 Ramsey Road, Shirley, NY 11967, USA

Bis-Tris PAGE



 Tel: 1-631-559-9269 1-516-512-3133

 Email: info@creative-biomart.com  Fax: 1-631-938-8127

 45-1 Ramsey Road, Shirley, NY 11967, USA