

## Recombinant Human CDH17 Domain 4 protein, mFc-tagged, Ultra Low Endotoxin

Cat. No. CDH17-1320H Lot. No. (See product label)

### SPECIFICATION

<b>Product Overview</b>	Ultra Low Endotoxin Recombinant Human CDH17 Domain 4 protein(Q12864)(Pro341-Phe449) is expressed from HEK293 with mFc (IgG2a) tag at the C-terminus.
<b>Species</b>	Human
<b>Source</b>	HEK293
<b>ProteinLength</b>	341-449 aa
<b>Form</b>	Lyophilized from 0.22 µm filtered solution in PBS (pH 7.4). Normally 8% trehalose is added as protectant before lyophilization.
<b>Molecular Mass</b>	The protein has a predicted MW of 38.78 kDa. Due to glycosylation, the protein migrates to 45-60 kDa based on Bis-Tris PAGE result.
<b>Endotoxin</b>	Less than 0.001 EU per µg by the LAL method.
<b>Purity</b>	> 95% as determined by Bis-Tris PAGE
<b>Storage</b>	-20 to -80°C for 12 months as supplied from date of receipt. -80°C for 3 months after reconstitution. Recommend to aliquot the protein into smaller quantities for optimal storage. Please minimize freeze-thaw cycles.

 Tel: 1-631-559-9269 1-516-512-3133

 Email: [info@creative-biomart.com](mailto:info@creative-biomart.com)  Fax: 1-631-938-8127

 45-1 Ramsey Road, Shirley, NY 11967, USA

**Reconstitution**      Dissolve the lyophilized protein in distilled water.

## GENE INFORMATION

**Gene Name**      [CDH17 cadherin 17, LI cadherin \(liver-intestine\) \[ Homo sapiens \]](#)

**Official Symbol**      [CDH17](#)

**Synonyms**      CDH17; cadherin 17, LI cadherin (liver-intestine); cadherin-17; cadherin; HPT 1; LI cadherin; LI-cadherin; cadherin-16; HPT-1 cadherin; liver-intestine cadherin; human peptide transporter 1; intestinal peptide-associated transporter HPT-1; human intestinal peptide-associated transporter HPT-1; HPT1; CDH16; HPT-1; FLJ26931; MGC138218; MGC142024;

**Gene ID**      [1015](#)

**mRNA Refseq**      [NM\\_001144663](#)

**Protein Refseq**      [NP\\_001138135](#)

**MIM**      [603017](#)

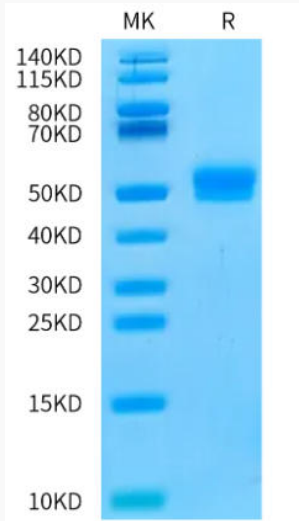
**UniProt ID**      [Q12864](#)

 Tel: 1-631-559-9269    1-516-512-3133

 Email: [info@creative-biomart.com](mailto:info@creative-biomart.com)     Fax: 1-631-938-8127

 45-1 Ramsey Road, Shirley, NY 11967, USA

**Bis-Tris PAGE**



 Tel: 1-631-559-9269 1-516-512-3133

 Email: [info@creative-biomart.com](mailto:info@creative-biomart.com)  Fax: 1-631-938-8127

 45-1 Ramsey Road, Shirley, NY 11967, USA