

# Active Recombinant Human CDH17 Domain 5 protein, mFc-tagged

Cat. No. CDH17-1321H Lot. No. (See product label)

## SPECIFICATION

<b>Product Overview</b>	Recombinant Human CDH17 Domain 5 protein(Q12864)(Glu450-Phe566) is expressed from HEK293 with mFc (IgG2a) tag at the C-terminus.
<b>Species</b>	Human
<b>Source</b>	HEK293
<b>ProteinLength</b>	450-566 aa
<b>Form</b>	Lyophilized from 0.22 µm filtered solution in PBS (pH 7.4). Normally 8% trehalose is added as protectant before lyophilization.
<b>Bio-activity</b>	Immobilized Human CDH17 Domain 5, mFc Tag at 0.5µg/ml (100µl/well) on the plate. Dose response curve for Biotinylated Anti-CDH17 Domain 5 Antibody, hFc Tag with the EC50 of 10.7ng/ml determined by ELISA.
<b>Molecular Mass</b>	The protein has a predicted MW of 39.06 kDa. Due to glycosylation, the protein migrates to 40-65 kDa based on Bis-Tris PAGE result.
<b>Endotoxin</b>	Less than 1 EU per µg by the LAL method.
<b>Purity</b>	> 95% as determined by Bis-Tris PAGE > 95% as determined by HPLC
<b>Storage</b>	-20 to -80°C for 12 months as supplied from date of receipt. -80°C for 3 months after

 Tel: 1-631-559-9269 1-516-512-3133

 Email: [info@creative-biomart.com](mailto:info@creative-biomart.com)  Fax: 1-631-938-8127

 45-1 Ramsey Road, Shirley, NY 11967, USA

reconstitution. Recommend to aliquot the protein into smaller quantities for optimal storage. Please minimize freeze-thaw cycles.

**Reconstitution** Dissolve the lyophilized protein in distilled water.

## GENE INFORMATION

**Gene Name** [CDH17 cadherin 17, LI cadherin \(liver-intestine\) \[ Homo sapiens \]](#)

**Official Symbol** [CDH17](#)

**Synonyms**

CDH17; cadherin 17, LI cadherin (liver-intestine); cadherin-17; cadherin; HPT 1; LI cadherin; LI-cadherin; cadherin-16; HPT-1 cadherin; liver-intestine cadherin; human peptide transporter 1; intestinal peptide-associated transporter HPT-1; human intestinal peptide-associated transporter HPT-1; HPT1; CDH16; HPT-1; FLJ26931; MGC138218; MGC142024;

**Gene ID** [1015](#)

**mRNA Refseq** [NM\\_001144663](#)

**Protein Refseq** [NP\\_001138135](#)

**MIM** [603017](#)

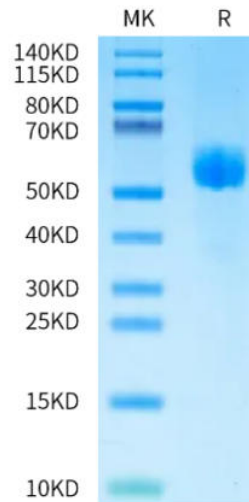
**UniProt ID** [Q12864](#)

 Tel: 1-631-559-9269 1-516-512-3133

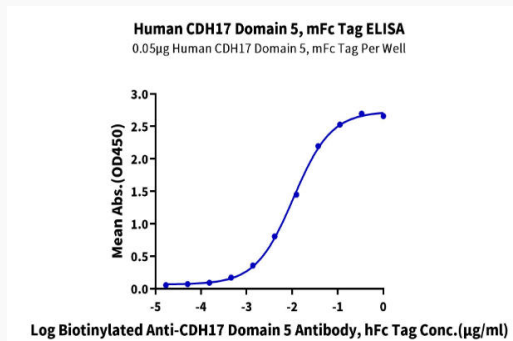
 Email: [info@creative-biomart.com](mailto:info@creative-biomart.com)  Fax: 1-631-938-8127

 45-1 Ramsey Road, Shirley, NY 11967, USA

**Bis-Tris PAGE**



**ELISA Data**



 Tel: 1-631-559-9269 1-516-512-3133

 Email: [info@creative-biomart.com](mailto:info@creative-biomart.com)  Fax: 1-631-938-8127

 45-1 Ramsey Road, Shirley, NY 11967, USA