

Active Recombinant Human CDH17 Domain 5-7 protein, His-tagged

Cat. No. CDH17-1322H Lot. No. (See product label)

SPECIFICATION

Product Overview	Active Recombinant Human CDH17 Domain 5-7 protein(Q12864)(Glu450-Gly777) is expressed from HEK293 with His tag at the C-Terminus.
Species	Human
Source	HEK293
ProteinLength	450-777 aa
Form	Lyophilized from 0.22µm filtered solution in PBS (pH 7.4). Normally 8% trehalose is added as protectant before lyophilization.
Bio-activity	Immobilized Human CDH17 Domain 5-7, His Tag at 0.5µg/ml (100µl/well) on the plate. Dose response curve for Anti-CDH17 Domain 5-7 Antibody, hFc Tag with the EC50 of 7.1ng/ml determined by ELISA.
Molecular Mass	The protein has a predicted MW of 36.79 kDa. Due to glycosylation, the protein migrates to 50-70 kDa based on Bis-Tris PAGE result.
Endotoxin	Less than 1 EU per µg by the LAL method.
Purity	> 95% as determined by Bis-Tris PAGE
Storage	-20 to -80°C for 12 months as supplied from date of receipt. -80°C for 3 months after

 Tel: 1-631-559-9269 1-516-512-3133

 Email: info@creative-biomart.com  Fax: 1-631-938-8127

 45-1 Ramsey Road, Shirley, NY 11967, USA

reconstitution. Recommend to aliquot the protein into smaller quantities for optimal storage. Please minimize freeze-thaw cycles.

Reconstitution Dissolve the lyophilized protein in distilled water.

GENE INFORMATION

Gene Name [CDH17 cadherin 17, LI cadherin \(liver-intestine\) \[Homo sapiens \]](#)

Official Symbol [CDH17](#)

Synonyms

CDH17; cadherin 17, LI cadherin (liver-intestine); cadherin-17; cadherin; HPT 1; LI cadherin; LI-cadherin; cadherin-16; HPT-1 cadherin; liver-intestine cadherin; human peptide transporter 1; intestinal peptide-associated transporter HPT-1; human intestinal peptide-associated transporter HPT-1; HPT1; CDH16; HPT-1; FLJ26931; MGC138218; MGC142024;

Gene ID [1015](#)

mRNA Refseq [NM_001144663](#)

Protein Refseq [NP_001138135](#)

MIM [603017](#)

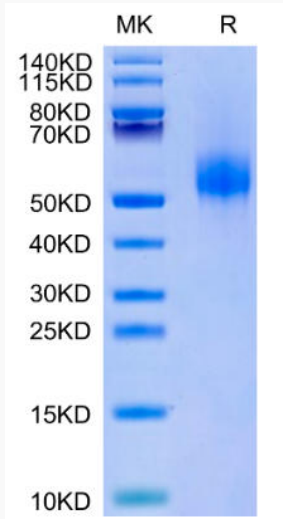
UniProt ID [Q12864](#)

 Tel: 1-631-559-9269 1-516-512-3133

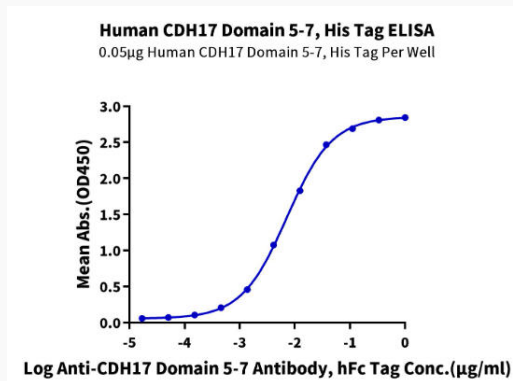
 Email: info@creative-biomart.com  Fax: 1-631-938-8127

 45-1 Ramsey Road, Shirley, NY 11967, USA

Bis-Tris PAGE



ELISA Data



 Tel: 1-631-559-9269 1-516-512-3133

 Email: info@creative-biomart.com  Fax: 1-631-938-8127

 45-1 Ramsey Road, Shirley, NY 11967, USA