

Active Recombinant Rhesus macaque CDH17 protein, His-tagged

Cat. No. CDH17-1337R Lot. No. (See product label)

SPECIFICATION

Product Overview	Recombinant Rhesus macaque CDH17 protein(A0A1D5R2B4)(23-784 aa) is expressed from HEK293 with His tag at the C-Terminus.
Species	Rhesus macaque
Source	HEK293
ProteinLength	23-784 aa
Form	Lyophilized from 0.22µm filtered solution in 20mM Tris, 150mM NaCl (pH 8.0). Normally 8% trehalose is added as protectant before lyophilization.
Bio-activity	Immobilized Rhesus macaque CDH17, His Tag at 0.5µg/ml (100µl/well) on the plate. Dose response curve for Anti-CDH17 Antibody, hFc Tag with the EC50 of 4.2ng/ml determined by ELISA.
Molecular Mass	The protein has a predicted MW of 85.60 kDa. Due to glycosylation, the protein migrates to 90-110 kDa based on Bis-Tris PAGE result.
Endotoxin	Less than 1 EU per µg by the LAL method.
Purity	> 95% as determined by Bis-Tris PAGE > 95% as determined by HPLC
Storage	-20 to -80°C for 12 months as supplied from date of receipt. -80°C for 3 months after

 Tel: 1-631-559-9269 1-516-512-3133

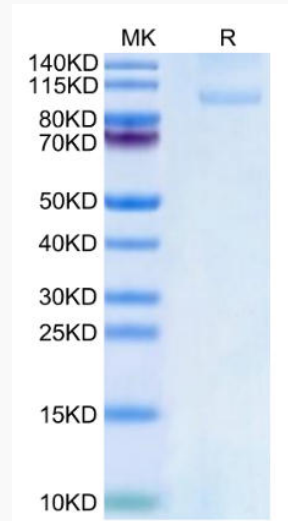
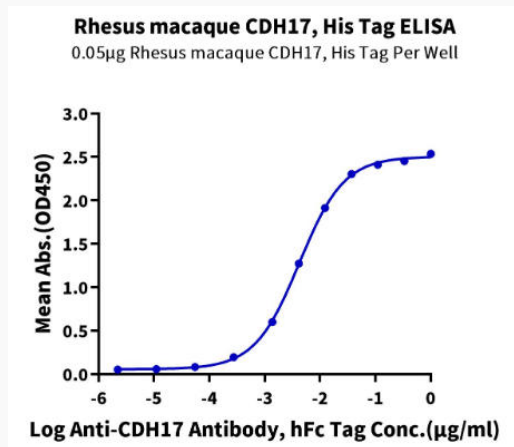
 Email: info@creative-biomart.com  Fax: 1-631-938-8127

 45-1 Ramsey Road, Shirley, NY 11967, USA

reconstitution. Recommend to aliquot the protein into smaller quantities for optimal storage. Please minimize freeze-thaw cycles.

Reconstitution

Dissolve the lyophilized protein in distilled water.

Bis-Tris PAGE

ELISA Data


Tel: 1-631-559-9269 1-516-512-3133

Email: info@creative-biomart.com Fax: 1-631-938-8127

45-1 Ramsey Road, Shirley, NY 11967, USA