

Recombinant Human CDH17 protein, His-tagged, Biotinylated

Cat. No. CDH17-1425H Lot. No. (See product label)

SPECIFICATION

Product Overview	Biotinylated Recombinant Human CDH17 protein(Q12864)(Glu450-Gly777), fused with C-terminal His tag, was expressed in HEK293.
Species	Human
Source	HEK293
ProteinLength	Glu450-Gly777
Tag	C-His
Conjugation/Label	Biotin
Form	Supplied as 0.22µm filtered solution in PBS (pH 7.4).
Bio-activity	
Molecular Mass	The protein has a predicted MW of 36.79 kDa. Due to glycosylation, the protein migrates to 50-70 kDa based on Tris-Bis PAGE result.
Endotoxin	Less than 1EU per µg by the LAL method.
Purity	> 95% as determined by Tris-Bis PAGE.
Storage	Valid for 12 months from date of receipt when stored at -80°C.;Recommend to aliquot

 Tel: 1-631-559-9269 1-516-512-3133

 Email: info@creative-biomart.com  Fax: 1-631-938-8127

 45-1 Ramsey Road, Shirley, NY 11967, USA

the protein into smaller quantities for optimal storage. Please do not repeated freeze-thaw cycles.

Reconstitution

It is recommended that sterile water be added to the vial to prepare a stock solution of 0.2 ug/ul. Centrifuge the vial at 4°C before opening to recover the entire contents.

Conjugation

Biotin

GENE INFORMATION

Gene Name

CDH17 cadherin 17, LI cadherin (liver-intestine) [Homo sapiens]

Official Symbol

CDH17

Synonyms

CDH17; cadherin 17, LI cadherin (liver-intestine); cadherin-17; cadherin; HPT 1; LI cadherin; LI-cadherin; cadherin-16; HPT-1 cadherin; liver-intestine cadherin; human peptide transporter 1; intestinal peptide-associated transporter HPT-1; human intestinal peptide-associated transporter HPT-1; HPT1; CDH16; HPT-1; FLJ26931; MGC138218; MGC142024;

Gene ID

1015

mRNA Refseq

NM_001144663

Protein Refseq

NP_001138135

MIM

603017

UniProt ID

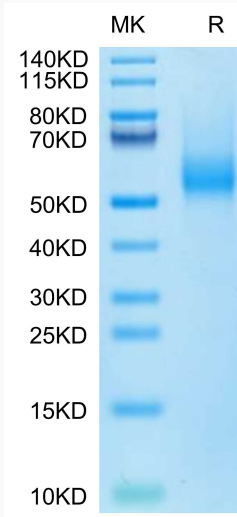
Q12864

 Tel: 1-631-559-9269 1-516-512-3133

 Email: info@creative-biomart.com  Fax: 1-631-938-8127

 45-1 Ramsey Road, Shirley, NY 11967, USA

Tris-Bis PAGE



 Tel: 1-631-559-9269 1-516-512-3133

 Email: info@creative-biomart.com  Fax: 1-631-938-8127

 45-1 Ramsey Road, Shirley, NY 11967, USA