

Recombinant Human CDH17 protein, rFc-tagged

Cat. No. CDH17-3693H Lot. No. (See product label)

SPECIFICATION

| | |
|-------------------------|--|
| Product Overview | Recombinant Human CDH17 protein(Q12864)(Gln23-Met787), fused with C-terminal rFc tag, was expressed in HEK293. |
| Species | Human |
| Source | HEK293 |
| Form | Lyophilized from 0.22 µm filtered solution in PBS, pH 7.4. Normally 5% trehalose and 5% mannitol are added as protectants before lyophilization. |
| Molecular Mass | 111.0 kDa |
| Endotoxin | <0.1 EU/µg protein, LAL method |
| Purity | >90 %, SDS-PAGE |
| Storage | It is recommended that the protein be aliquoted for optimal storage. Avoid repeated freeze-thaw cycles. Until expiry date, -20°C to -80°C as lyophilized proteins. 3 months, -20°C to -80°C under sterile conditions after reconstitution. |
| Reconstitution | Briefly centrifuge the tube before opening. Reconstitute at 0.1-0.5 mg/mL in sterile water. |

GENE INFORMATION

 Tel: 1-631-559-9269 1-516-512-3133

 Email: info@creative-biomart.com  Fax: 1-631-938-8127

 45-1 Ramsey Road, Shirley, NY 11967, USA

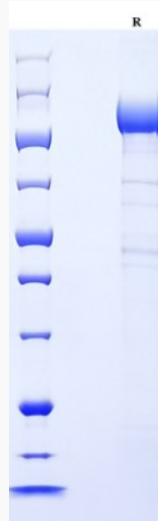
| | |
|------------------------|--|
| Gene Name | CDH17 cadherin 17, LI cadherin (liver-intestine) [Homo sapiens] |
| Official Symbol | CDH17 |
| Synonyms | CDH17; cadherin 17, LI cadherin (liver-intestine); cadherin-17; cadherin; HPT 1; LI cadherin; LI-cadherin; cadherin-16; HPT-1 cadherin; liver-intestine cadherin; human peptide transporter 1; intestinal peptide-associated transporter HPT-1; human intestinal peptide-associated transporter HPT-1; HPT1; CDH16; HPT-1; FLJ26931; MGC138218; MGC142024; |
| Gene ID | 1015 |
| mRNA Refseq | NM_001144663 |
| Protein Refseq | NP_001138135 |
| MIM | 603017 |
| UniProt ID | Q12864 |

 Tel: 1-631-559-9269 1-516-512-3133

 Email: info@creative-biomart.com  Fax: 1-631-938-8127

 45-1 Ramsey Road, Shirley, NY 11967, USA

SDS-PAGE



 Tel: 1-631-559-9269 1-516-512-3133

 Email: info@creative-biomart.com  Fax: 1-631-938-8127

 45-1 Ramsey Road, Shirley, NY 11967, USA