

Recombinant Human CDH18 Protein, GST-Tagged

Cat. No. CDH18-0979H Lot. No. (See product label)

SPECIFICATION

Product Overview	Human CDH18 full-length ORF (AAH31051, 1 a.a. - 790 a.a.) recombinant protein with GST-tag at N-terminal.
Species	Human
Source	Wheat Germ
Description	<p>This gene encodes a type II classical cadherin from the cadherin superfamily of integral membrane proteins that mediate calcium-dependent cell-cell adhesion. Mature cadherin proteins are composed of a large N-terminal extracellular domain, a single membrane-spanning domain, and a small, highly conserved C-terminal cytoplasmic domain. Type II (atypical) cadherins are defined based on their lack of a HAV cell adhesion recognition sequence specific to type I cadherins. This particular cadherin is expressed specifically in the central nervous system and is putatively involved in synaptic adhesion, axon outgrowth and guidance. Alternatively spliced transcript variants encoding different isoforms have been found for this gene. [provided by RefSeq, May 2014]</p>
Molecular Mass	112.53 kDa
AA Sequence	<p>MKITSTSCICPVLVCLCFVQRCYGTAAHSSIKVMRNQTKHIEGETEVHHRPKRGWV WNQFFVLEEHMGPDPQYVVGKLHSNSDKGDGSVKYILTGEAGTIFIIDDTTGDIHST KSLDREQKTHYVLAQAIDRRTNKPLEPESEFIIKVQDINDNAPKFTDGPYIVTVPEM SDMGTSVLQVTATDADDPTYGNSARVVYSILQGQPYFSVDPKTGVIRTUALHNMDGE</p>

 Tel: 1-631-559-9269 1-516-512-3133

 Email: info@creative-biomart.com  Fax: 1-631-938-8127

 45-1 Ramsey Road, Shirley, NY 11967, USA

AREHYSVVIQAKDMAGQVGGLSGSTTVNITLTDVNDNTPRFPQKHYQLYVPESAQV
 GSAVGKIKANDADTGSNADMTYSIINGDGMGIFSISTDKETREGILSLKKPLNYEKKK
 SYTLNIEGANTHLDFRFSHLGPFKDATMLKIIVGDVDEPPLFSMPSYLMEVYENAKIG
 TVVGTVLAQDPDSINSLVRYFINYNVEDDRFFNIDANTGTIRTTKVLDRRETPWYNITV
 TASEIDNPDLLSHVTVGIRVLDVNDNPPELAREYDIIVCENSKPGQVIHTISATDKDDF
 ANGRPNFFLDERLPVNPFTLKDNEANTASILTRRRRFSRTVQDVVYLPIMISDGGI
 PSLSSSSTLTIRVCACERDGRVRTCHAEAFSSAGLSTGALIAILLCVLILLAIVVLFITL
 RRSKKEPLIISEEDVRENVVTYDDEGGGEEDTGAFDITALRNPSAAEELKYRRDIRPE
 VKLTPRHQTSSTLESIDVQEFIKQRLAEADLDPSVPPYDSLQTYAYEGQRSEAGSISS
 LDSATTQSDQDYHYLGDWGPEFKKLAELYGEIESERTT

Applications

Enzyme-linked Immunoabsorbent Assay
 Western Blot (Recombinant protein)
 Antibody Production
 Protein Array

Storage

Store at -80 centigrade. Aliquot to avoid repeated freezing and thawing.

Storage Buffer

50 mM Tris-HCl, 10 mM reduced Glutathione, pH=8.0 in the elution buffer.

GENE INFORMATION

Gene Name

CDH18 cadherin 18, type 2 [Homo sapiens]

Official Symbol

CDH18

Synonyms

CDH18; cadherin 18, type 2; cadherin-18; CDH14; EY CADHERIN; cadherin-14; ey-cadherin; cadherin-like 24; CDH24; CDH14L;

Gene ID

1016

 Tel: 1-631-559-9269 1-516-512-3133

 Email: info@creative-biomart.com  Fax: 1-631-938-8127

 45-1 Ramsey Road, Shirley, NY 11967, USA

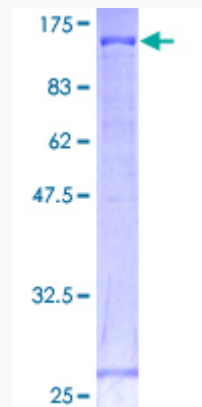
mRNA Refseq [NM_001167667](#)

Protein Refseq [NP_001161139](#)

MIM [603019](#)

UniProt ID [Q13634](#)

**Quality Control
Testing**



12.5% SDS-PAGE Stained with Coomassie Blue.

 Tel: 1-631-559-9269 1-516-512-3133

 Email: info@creative-biomart.com  Fax: 1-631-938-8127

 45-1 Ramsey Road, Shirley, NY 11967, USA