

## Recombinant Human CDH2 Protein, GST-Tagged

Cat. No. CDH2-0984H Lot. No. (See product label)

### SPECIFICATION

<b>Product Overview</b>	Human CDH2 partial ORF (NP_001783, 807 a.a. - 906 a.a.) recombinant protein with GST-tag at N-terminal.
<b>Species</b>	Human
<b>Source</b>	Wheat Germ
<b>Description</b>	This gene encodes a classical cadherin and member of the cadherin superfamily. Alternative splicing results in multiple transcript variants, at least one of which encodes a preproprotein is proteolytically processed to generate a calcium-dependent cell adhesion molecule and glycoprotein. This protein plays a role in the establishment of left-right asymmetry, development of the nervous system and the formation of cartilage and bone. [provided by RefSeq, Nov 2015]
<b>Molecular Mass</b>	36.74 kDa
<b>AA Sequence</b>	RRMDERPIHAEPQYPVRSAAHPG DIGDFINEGLKAADNDPTAPPYD SLLVFDYEGS GSTAGSLSSLNSSSSGGEQDYDYLNDWGPRFKKLADMYGGGDD
<b>Applications</b>	Enzyme-linked Immunoabsorbent Assay Western Blot (Recombinant protein) Antibody Production Protein Array
<b>Storage</b>	Store at -80 centigrade. Aliquot to avoid repeated freezing and thawing.

 Tel: 1-631-559-9269 1-516-512-3133

 Email: [info@creative-biomart.com](mailto:info@creative-biomart.com)  Fax: 1-631-938-8127

 45-1 Ramsey Road, Shirley, NY 11967, USA

**Storage Buffer** 50 mM Tris-HCl, 10 mM reduced Glutathione, pH=8.0 in the elution buffer.

## GENE INFORMATION

**Gene Name** CDH2 cadherin 2, type 1, N-cadherin (neuronal) [ Homo sapiens ]

**Official Symbol** CDH2

**Synonyms** CDH2; cadherin 2, type 1, N-cadherin (neuronal); NCAD; cadherin-2; CD325; CDHN; N cadherin; N-cadherin 1; neural cadherin; neural-cadherin; cadherin 2, N-cadherin (neuronal); calcium-dependent adhesion protein, neuronal; CDw325;

**Gene ID** 1000

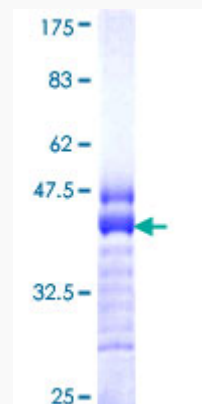
**mRNA Refseq** NM\_001792

**Protein Refseq** NP\_001783

**MIM** 114020

**UniProt ID** P19022

**Quality Control Testing**



Tel: 1-631-559-9269 1-516-512-3133

Email: [info@creative-biomart.com](mailto:info@creative-biomart.com) Fax: 1-631-938-8127

45-1 Ramsey Road, Shirley, NY 11967, USA



12.5% SDS-PAGE Stained with Coomassie Blue.

 Tel: 1-631-559-9269 1-516-512-3133

 Email: [info@creative-biomart.com](mailto:info@creative-biomart.com)  Fax: 1-631-938-8127

 45-1 Ramsey Road, Shirley, NY 11967, USA