

Recombinant Human CDH2 Protein (Asp160-Ala724), N-His tagged

Cat. No. CDH2-1306H Lot. No. (See product label)

SPECIFICATION

Product Overview	Recombinant Human CD325/CDH2 (Asp160-Ala724) fused with the N-His tag was expressed in E. coli.
Species	Human
Source	E.coli
ProteinLength	Asp160-Ala724
Form	Lyophilized powder/frozen liquid
Molecular Mass	64.11 kDa
Purity	>90% as determined by SDS-PAGE.
Notes	For research use only.
Storage	Use a manual defrost freezer and avoid repeated freeze thaw cycles. Store at 2 to 8 centigrade for one week. Store at -20 to -80 centigrade for twelve months from the date of receipt.
Storage Buffer	0.01M PBS, pH 7.4, 0.02% NLS
Reconstitution	Reconstitute in sterile water for a stock solution.

 Tel: 1-631-559-9269 1-516-512-3133

 Email: info@creative-biomart.com  Fax: 1-631-938-8127

 45-1 Ramsey Road, Shirley, NY 11967, USA

Shipping They are shipped out with dry ice/blue ice unless customers require otherwise.

GENE INFORMATION

Gene Name CDH2 cadherin 2, type 1, N-cadherin (neuronal) [Homo sapiens (human)]

Official Symbol CDH2

Synonyms CDH2; cadherin 2, type 1, N-cadherin (neuronal); NCAD; cadherin-2; CD325; CDHN; N cadherin; N-cadherin 1; neural cadherin; neural-cadherin; cadherin 2, N-cadherin (neuronal); calcium-dependent adhesion protein, neuronal; CDw325;

Gene ID 1000

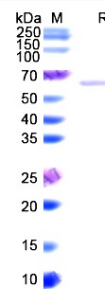
mRNA Refseq NM_001792


Protein Refseq NP_001783

MIM 114020

UniProt ID P19022

SDS-PAGE



 Tel: 1-631-559-9269 1-516-512-3133

 Email: info@creative-biomart.com  Fax: 1-631-938-8127

 45-1 Ramsey Road, Shirley, NY 11967, USA