

Active Recombinant Human CDH2 protein, His-tagged

Cat. No. CDH2-2191H Lot. No. (See product label)

SPECIFICATION

Product Overview	Active Recombinant Human CDH2 protein(NP_001783.2)(Met 1-Ala 724) was expressed in HEK293, fused with a polyhistidine tag at the C-terminus.
Species	Human
Source	HEK293
ProteinLength	1-724 aa
Form	Lyophilized from sterile PBS, pH 7.4.
Bio-activity	Measured by the ability of the immobilized protein to support the adhesion of MCF-7 human breast adenocarcinoma cells. When 5 x 10E4 cells/well are added to Recombinant Human Cadherin-2 coated plates (5 µg/mL with 100 µL/well), apximately >50% will adhere after 1 hour at 37°C.
Molecular Mass	The form of human CDH2 consists of 710 amino acids and predicts a molecular mass of 78.5 kDa. In SDS-PAGE under reducing conditions, the apparent molecular mass of CDH2 is 90 & 75 kDa corresponding to the fom and mature form respectively due to glycosylation.
Endotoxin	< 1.0 EU per µg of the protein as determined by the LAL method.
Purity	> 95 % as determined by SDS-PAGE

 Tel: 1-631-559-9269 1-516-512-3133

 Email: info@creative-biomart.com  Fax: 1-631-938-8127

 45-1 Ramsey Road, Shirley, NY 11967, USA

Storage	Store it under sterile conditions at -20°C to -80°C upon receiving. Recommend to aliquot the protein into smaller quantities for optimal storage. Avoid repeated freeze-thaw cycles.
Reconstitution	It is recommended that sterile water be added to the vial to prepare a stock solution of 0.2 ug/ul. Centrifuge the vial at 4°C before opening to recover the entire contents.
protein Refseq-Weblink	http://www.ncbi.nlm.nih.gov/protein/NP_001783.2
Unit ID	P19022
Unit ID-Weblink	http://www.uniprot.org/uniprot/P19022

GENE INFORMATION

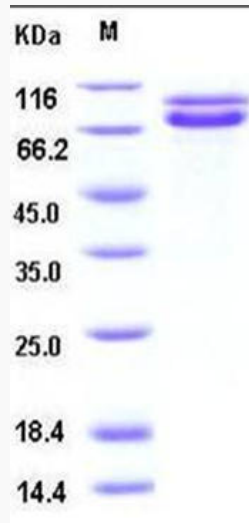
Gene Name	CDH2 cadherin 2, type 1, N-cadherin (neuronal) [Homo sapiens]
Official Symbol	CDH2
Synonyms	CDH2; cadherin 2, type 1, N-cadherin (neuronal); NCAD; cadherin-2; CD325; CDHN; N cadherin; N-cadherin 1; neural cadherin; neural-cadherin; cadherin 2, N-cadherin (neuronal); calcium-dependent adhesion protein, neuronal; CDw325;
Gene ID	1000
mRNA Refseq	NM_001792
protein Refseq	NP_001783
MIM	114020

 Tel: 1-631-559-9269 1-516-512-3133

 Email: info@creative-biomart.com  Fax: 1-631-938-8127

 45-1 Ramsey Road, Shirley, NY 11967, USA

SDS-PAGE



 Tel: 1-631-559-9269 1-516-512-3133

 Email: info@creative-biomart.com  Fax: 1-631-938-8127

 45-1 Ramsey Road, Shirley, NY 11967, USA