

Recombinant Human CDH2 protein, His-tagged

Cat. No. CDH2-271H Lot. No. (See product label)

SPECIFICATION

Product Overview	Recombinant Human CDH2 protein(NP_001783.2) (Met1-Ala724) was expressed in Insect Cells with a polyhistidine tag at the C-terminus.
Species	Human
Source	Insect Cells
ProteinLength	1-724 aa
Form	Lyophilized from sterile 20 mM Tris, 500 mM NaCl, 10 % glycerol, pH 7.4.
Molecular Mass	The recombinant human CDH2 consists 710 amino acids and predicts a molecular mass of 78.5 kDa.
Endotoxin	< 1.0 EU per µg of the protein as determined by the LAL method.
Purity	> 90 % as determined by SDS-PAGE
Storage	Store it under sterile conditions at -20°C to -80°C upon receiving. Recommend to aliquot the protein into smaller quantities for optimal storage. Avoid repeated freeze-thaw cycles.
Reconstitution	It is recommended that sterile water be added to the vial to prepare a stock solution of 0.2 ug/ul. Centrifuge the vial at 4°C before opening to recover the entire contents.

 Tel: 1-631-559-9269 1-516-512-3133

 Email: info@creative-biomart.com  Fax: 1-631-938-8127

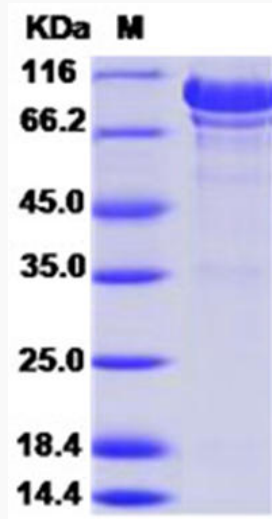
 45-1 Ramsey Road, Shirley, NY 11967, USA

protein Refseq-Weblink	http://www.ncbi.nlm.nih.gov/protein/NP_001783.2
Unit ID	P19022
Unit ID-Weblink	http://www.uniprot.org/uniprot/P19022

GENE INFORMATION

Gene Name	CDH2 cadherin 2, type 1, N-cadherin (neuronal) [Homo sapiens]
Official Symbol	CDH2
Synonyms	CDH2; cadherin 2, type 1, N-cadherin (neuronal); NCAD; cadherin-2; CD325; CDHN; N cadherin; N-cadherin 1; neural cadherin; neural-cadherin; cadherin 2, N-cadherin (neuronal); calcium-dependent adhesion protein, neuronal; CDw325;
Gene ID	1000
mRNA Refseq	NM_001792
protein Refseq	NP_001783
MIM	114020

SDS-PAGE



 Tel: 1-631-559-9269 1-516-512-3133

 Email: info@creative-biomart.com  Fax: 1-631-938-8127

 45-1 Ramsey Road, Shirley, NY 11967, USA