

## Recombinant Human CDH2 Protein, His tagged

Cat. No. CDH2-3153H Lot. No. (See product label)

### SPECIFICATION

<b>Product Overview</b>	Recombinant human CDH2, fused to His-tag at C-terminus, was expressed in insect cell and purified by using conventional chromatography techniques.
<b>Species</b>	Human
<b>Source</b>	Insect Cells
<b>ProteinLength</b>	160-724 aa
<b>Description</b>	This gene encodes a classical cadherin and member of the cadherin superfamily. Alternative splicing results in multiple transcript variants, at least one of which encodes a preproprotein is proteolytically processed to generate a calcium-dependent cell adhesion molecule and glycoprotein. This protein plays a role in the establishment of left-right asymmetry, development of the nervous system and the formation of cartilage and bone.
<b>Form</b>	Liquid
<b>AASequence</b>	ADPDWVIPPINLPENSRGPFQELVRIRSDRDKNLSLRYSVTGPGADQPPTGIFIINPI SGQLSVTKPLDREQIARFHLRAHAVDINGNQVENPIDIVINVIDMNDNRPEFLHQVWN GTVPEGSKPGTYVMTVTAIDADDPNALNGMLRYRIVSQAPSTPSPNMFTINNETGDII TVAAGLDREKVQQYTLIIQATDMEGNPTYGLSNTATAVITVTDVNDNPPEFTAMTFY GEVPENRVDIIVANLTVTDKQPHTPAWNAVYRISGGDPTGRFAIQTDPNNSNDGLVT VVKPIDFETNRMFVLTVAAENQVPLAKGIQHPPQSTATVSVTVIDVNENPYFAPNPKII RQEGLHAGTMLTTFTAQDPDRYMQQNIRYTKLSDPANWLKIDPVNGQITTIIVLDR

 Tel: 1-631-559-9269 1-516-512-3133

 Email: [info@creative-biomart.com](mailto:info@creative-biomart.com)  Fax: 1-631-938-8127

 45-1 Ramsey Road, Shirley, NY 11967, USA

ESPNVKNNIYNATFLASDNGIPPMSGTGTLLQIYLLDINDNAPQVLPQEAETCETDPDN  
 SINITALDYDIDPNAGPFAFDLPLSPVTIKRNWTITRLNGDFAQLNLIKIFLEAGIYEVPII  
 ITDSGNPPKSNISILRVKVCQCDSNGDCTDVDRIVGAGLGTGAHHHHHH

<b>Molecular Mass</b>	62.9 kDa
<b>Endotoxin</b>	< 1 EU/μg of protein (determined by LAL method)
<b>Purity</b>	> 90% by SDS-PAGE
<b>Application</b>	SDS-PAGE
<b>Note</b>	For research use only. This product is not intended or approved for human, diagnostics or veterinary use.
<b>Storage</b>	Can be stored at +2 to +8 centigrade for 1 week. For long term storage, aliquot and store at -20 to -80 centigrade. Avoid repeated freezing and thawing cycles.
<b>Storage Buffer</b>	Phosphate-Buffered Saline (pH 7.4) containing 20% glycerol
<b>Concentration</b>	0.5 mg/mL (determined by absorbance at 280nm)

## GENE INFORMATION

<b>Gene ID</b>	1000
<b>Gene Name</b>	CDH2 cadherin 2 [ Homo sapiens (human) ]
<b>Official Symbol</b>	1000
<b>Synonyms</b>	CDH2; cadherin 2, type 1, N-cadherin (neuronal); NCAD; cadherin-2; CD325; CDHN;

 Tel: 1-631-559-9269 1-516-512-3133

 Email: [info@creative-biomart.com](mailto:info@creative-biomart.com)  Fax: 1-631-938-8127

 45-1 Ramsey Road, Shirley, NY 11967, USA

N cadherin; N-cadherin 1; neural cadherin; neural-cadherin; cadherin 2, N-cadherin (neuronal); calcium-dependent adhesion protein, neuronal; CDw325;

**mRNA Refseq** [NM\\_001792](#)

**Official Symbol 2** [CDH2](#)

**Gene ID 2** [1000](#)

**Gene Name 2** [CDH2 cadherin 2 \[ Homo sapiens \(human\) \]](#)

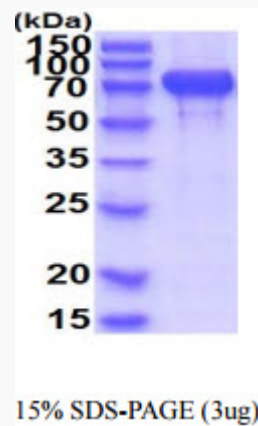
**mRNA Refseq 2** [NM\\_001792](#)

**Protein Refseq 2** [NP\\_001783](#)

**MIM 2** [114020](#)

**UniProt ID 2** [P19022](#)

**SDS-PAGE**



3 µg by SDS-PAGE under reducing condition and visualized by coomassie blue

 Tel: 1-631-559-9269 1-516-512-3133

 Email: [info@creative-biomart.com](mailto:info@creative-biomart.com)  Fax: 1-631-938-8127

 45-1 Ramsey Road, Shirley, NY 11967, USA



stain.

 Tel: 1-631-559-9269 1-516-512-3133

 Email: [info@creative-biomart.com](mailto:info@creative-biomart.com)  Fax: 1-631-938-8127

 45-1 Ramsey Road, Shirley, NY 11967, USA