

Recombinant Human CDH2 protein, His-tagged

Cat. No. CDH2-7023H Lot. No. (See product label)

SPECIFICATION

Product Overview	Recombinant Human CDH2 aa. (Ser685~Asp784 (Accession # P19022)) fused with N-terminal His tag was produced in E. coli cells.
Species	Human
Source	E.coli
ProteinLength	Ser685~Asp784
Description	This gene encodes a classical cadherin and member of the cadherin superfamily. Alternative splicing results in multiple transcript variants, at least one of which encodes a preproprotein is proteolytically processed to generate a calcium-dependent cell adhesion molecule and glycoprotein. This protein plays a role in the establishment of left-right asymmetry, development of the nervous system and the formation of cartilage and bone.
Form	Freeze-dried powder
Molecular Mass	Predicted Molecular Mass: 12.6kDa
Endotoxin	<1.0EU per 1ug (determined by the LAL method)
Purity	>95%
Characteristic	The isoelectric point is 5.2.

 Tel: 1-631-559-9269 1-516-512-3133

 Email: info@creative-biomart.com  Fax: 1-631-938-8127

 45-1 Ramsey Road, Shirley, NY 11967, USA

Applications	SDS-PAGE; WB; ELISA; IP
Stability	The thermal stability is described by the loss rate. The loss rate was determined by accelerated thermal degradation test, that is, incubate the protein at 37°C for 48h, and no obvious degradation and precipitation were observed. The loss rate is less than 5% within the expiration date under appropriate storage condition.
Storage	Avoid repeated freeze/thaw cycles. Store at 2-8°C for one month. Aliquot and store at -80°C for 12 months.
Storage buffer	Supplied as lyophilized form in PBS, pH7.4, containing 5% sucrose, 0.01% sarcosyl.
Reconstitution	Reconstitute in sterile PBS, pH7.2-pH7.4.

GENE INFORMATION

Gene Name	CDH2 cadherin 2 [Homo sapiens (human)]
Official Symbol	CDH2
Synonyms	CDH2; cadherin 2; CDHN; NCAD; CD325; CDw325; cadherin-2; N-cadherin 1; cadherin 2, type 1, N-cadherin (neuronal); calcium-dependent adhesion protein, neuronal; neural cadherin
Gene ID	1000
mRNA Refseq	NM_001308176.1
Protein Refseq	NP_001295105.1
UniProt ID	P19022

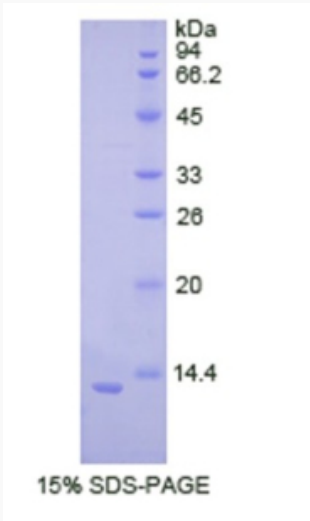
 Tel: 1-631-559-9269 1-516-512-3133

 Email: info@creative-biomart.com  Fax: 1-631-938-8127

 45-1 Ramsey Road, Shirley, NY 11967, USA



SDS-PAGE



Tel: 1-631-559-9269 1-516-512-3133

Email: info@creative-biomart.com Fax: 1-631-938-8127

45-1 Ramsey Road, Shirley, NY 11967, USA