

# Recombinant Full Length Human CDH2 Protein, C-Flag-tagged

Cat. No. CDH2-877HFL Lot. No. (See product label)

## SPECIFICATION

<b>Product Overview</b>	Recombinant Full Length Human CDH2 Protein, fused to Flag-tag at C-terminus, was expressed in Mammalian cells.
<b>Species</b>	Human
<b>Source</b>	Mammalian Cells
<b>Description</b>	This gene encodes a classical cadherin and member of the cadherin superfamily. Alternative splicing results in multiple transcript variants, at least one of which encodes a preproprotein is proteolytically processed to generate a calcium-dependent cell adhesion molecule and glycoprotein. This protein plays a role in the establishment of left-right asymmetry, development of the nervous system and the formation of cartilage and bone.
<b>Form</b>	25 mM Tris HCl, pH 7.3, 100 mM glycine, 10% glycerol.
<b>Molecular Mass</b>	97.2 kDa
<b>AA Sequence</b>	MCRIAGALRTLLPLLAALLQASVEASGEIALCKTGFPEDVYSAVLSKDVHEGQPLLNV KFSNCNGKRKVQ YESSEPADFKVDEDGMVYAVRSFPLSSEHAKFLIYAQDKETQEK WQVAVKLSLKPTLTEESVKESAEEVEE IVFPRQFSKHSGHLQRQKRDDWVISPINLPEN SRGPFQELVRIRSDRDKNLSLRYSVTGPGADQPPTGIF IINPISGQLSVTKPLDREQ IARFHLRAHAVDINGNQVENPIDIVINVIDMNDNRPEFLHQVWNGTVPEGS KPGTYV MTVTAIDADDPNALNGMLRYRIVSQAPSTPSPNMFTINNETGDIITVAAGLDREKVQQ YTLIIQ ATDMEGNPTYGLSNTATAVITVTDVNDNPPEFTAMTFYGEVPENRVDIVAN

 Tel: 1-631-559-9269 1-516-512-3133

 Email: [info@creative-biomart.com](mailto:info@creative-biomart.com)  Fax: 1-631-938-8127

 45-1 Ramsey Road, Shirley, NY 11967, USA

LTVTDKQPHTPAUNAVY RISGGDPTGRFAIQTDQNSNDGLVTVVVKPIDFEANRMF  
 VLTVAENQVPLAKGIQHPPQSTATMSVTVID VNENPYFAPNPKIIRQEEGLHAGTM  
 LTTFTAQDPDRYMQQNIRYTKLSDPANWLKIDPVNGQITTIIVLD RESPNVKNNIYNA  
 TFLASDNGIPPMSGTGTLLQIYLLDINDNAPQVLPQEAETCETPDPNSINITALDYGI DP  
 NAGPFAFDLPLSPVTIKRNWTITRLNGDFAQLNLKIKFLEAGIYEVPIIITDSGNPPKSNI  
 SILRVKV CQCDSNGDCTDVDRIVGAGLGTGAIILLIILLILVLMFVWWMKRRDKER  
 QAKQLLIDPEDDVRDNI LKYDEEGGGGEEDQDYDLSQLQQPDTVEPDAIKPVGIRRM  
 DERPIHAEPQYPVRSAPHPGDIGDFINEGL KAADNDPTAPPYDSSLVFDYEGSGST  
 AGSLSSLNSSSSGGGEQDYDYLNDWGPRFKKLADMYGGGDDTRTRPLEQKLISEED  
 LAANDILDYKDDDDKV

<b>Purity</b>	> 80% as determined by SDS-PAGE and Coomassie blue staining.
<b>Stability</b>	Stable for 12 months from the date of receipt of the product under proper storage and handling conditions. Avoid repeated freeze-thaw cycles.
<b>Storage</b>	Store at -80 centigrade.
<b>Concentration</b>	>50 ug/mL as determined by microplate BCA method.
<b>Preparation</b>	Recombinant protein was captured through anti-DDK affinity column followed by conventional chromatography steps.
<b>Protein Families</b>	Druggable Genome, ES Cell Differentiation/IPS, Transmembrane
<b>Protein Pathways</b>	Arrhythmogenic right ventricular cardiomyopathy (ARVC), Cell adhesion molecules (CAMs)
<b>Full Length</b>	Full L.

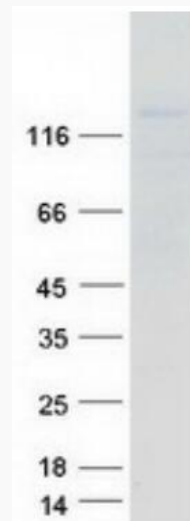
 Tel: 1-631-559-9269 1-516-512-3133

 Email: [info@creative-biomart.com](mailto:info@creative-biomart.com)
 Fax: 1-631-938-8127

 45-1 Ramsey Road, Shirley, NY 11967, USA

## GENE INFORMATION

<b>Gene Name</b>	CDH2 cadherin 2 [ Homo sapiens (human) ]
<b>Official Symbol</b>	CDH2
<b>Synonyms</b>	CDHN; NCAD; ACOGS; ADHD8; CD325; ARVD14; CDw325
<b>Gene ID</b>	1000
<b>mRNA Refseq</b>	NM_001792.5
<b>Protein Refseq</b>	NP_001783.2
<b>MIM</b>	114020
<b>UniProt ID</b>	P19022



 Tel: 1-631-559-9269 1-516-512-3133

 Email: [info@creative-biomart.com](mailto:info@creative-biomart.com)  Fax: 1-631-938-8127

 45-1 Ramsey Road, Shirley, NY 11967, USA



Coomassie blue staining of purified CDH2 protein.

 Tel: 1-631-559-9269 1-516-512-3133

 Email: [info@creative-biomart.com](mailto:info@creative-biomart.com)  Fax: 1-631-938-8127

 45-1 Ramsey Road, Shirley, NY 11967, USA