

# Recombinant Full Length Human CDH20 Protein, N-His-tagged

Cat. No. CDH20-22HFL Lot. No. (See product label)

## SPECIFICATION

<b>Product Overview</b>	Recombinant Full Length Human CDH20 Protein, fused to His-tag at N-terminus, was expressed in E. coli.
<b>Species</b>	Human
<b>Source</b>	E.coli
<b>Description</b>	This gene is a type II classical cadherin from the cadherin superfamily and one of three cadherin 7-like genes located in a cluster on chromosome 18. The encoded membrane protein is a calcium dependent cell-cell adhesion glycoprotein comprised of five extracellular cadherin repeats, a transmembrane region and a highly conserved cytoplasmic tail. Type II (atypical) cadherins are defined based on their lack of a HAV cell adhesion recognition sequence specific to type I cadherins. Since disturbance of intracellular adhesion is a prerequisite for invasion and metastasis of tumor cells, cadherins are considered prime candidates for tumor suppressor genes.
<b>Form</b>	25 mM Tris-HCl, pH 8.0, 150 mM NaCl, 1% sarkosyl, 10% glycerol.
<b>Molecular Mass</b>	85.1 kDa
<b>AA Sequence</b>	A DNA sequence encoding human full-length CDH20
<b>Purity</b>	> 80% as determined by SDS-PAGE and Coomassie blue staining.
<b>Notes</b>	For research use only. This product is not intended or approved for human,

 Tel: 1-631-559-9269 1-516-512-3133

 Email: [info@creative-biomart.com](mailto:info@creative-biomart.com)  Fax: 1-631-938-8127

 45-1 Ramsey Road, Shirley, NY 11967, USA



diagnostics or veterinary use.

**Storage**

Store at -80 centigrade.

**Concentration**

>0.05 µg/µL as determined by microplate BCA method.

**Use/Stability**

Stable for 12 months from the date of receipt of the product under proper storage and handling conditions. Avoid repeated freeze-thaw cycles.

## GENE INFORMATION

**Gene Name**

CDH20 cadherin 20 [ Homo sapiens (human) ]

**Official Symbol**

CDH20

**Synonyms**

CDH20; cadherin 20; Cdh7; CDH7L3

**Gene ID**

28316

**mRNA Refseq**

NM\_031891.4

**Protein Refseq**

NP\_114097.2

**MIM**

605807

**UniProt ID**

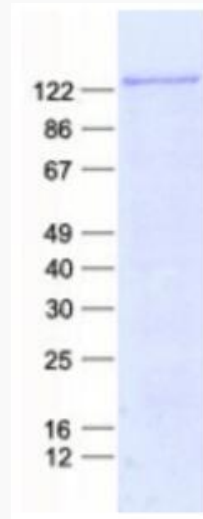
Q9HBT6

 Tel: 1-631-559-9269 1-516-512-3133

 Email: [info@creative-biomart.com](mailto:info@creative-biomart.com)  Fax: 1-631-938-8127

 45-1 Ramsey Road, Shirley, NY 11967, USA

**SDS-PAGE**



 Tel: 1-631-559-9269 1-516-512-3133

 Email: [info@creative-biomart.com](mailto:info@creative-biomart.com)  Fax: 1-631-938-8127

 45-1 Ramsey Road, Shirley, NY 11967, USA