

## Recombinant Human CDH22 Protein, GST-tagged

Cat. No. CDH22-5180H Lot. No. (See product label)

### SPECIFICATION

<b>Product Overview</b>	Human CDH22 partial ORF ( NP_067071, 274 a.a. - 383 a.a.) recombinant protein with GST-tag at N-terminal.
<b>Species</b>	Human
<b>Source</b>	Wheat Germ
<b>Description</b>	This gene is a member of the cadherin superfamily. The gene product is composed of five cadherin repeat domains and a cytoplasmic tail similar to the highly conserved cytoplasmic region of classical cadherins. Expressed predominantly in the brain, this putative calcium-dependent cell adhesion protein may play an important role in morphogenesis and tissue formation in neural and non-neural cells during development and maintenance of the brain and neuroendocrine organs. [provided by RefSeq, Jul 2008]
<b>Molecular Mass</b>	37.84 kDa
<b>AA Sequence</b>	PPRFPQKMYQFSIQESAPIGTAVGRVKAEDSDVGENTDMTYHLKDESSSGGDVFKV TTDSDTQEAIIVVQKRLDFESQPVHTVILEALNKFVDPRFADLGTFRDQAIVRV
<b>Applications</b>	Enzyme-linked Immunoabsorbent Assay Western Blot (Recombinant protein) Antibody Production Protein Array

 Tel: 1-631-559-9269 1-516-512-3133

 Email: [info@creative-biomart.com](mailto:info@creative-biomart.com)  Fax: 1-631-938-8127

 45-1 Ramsey Road, Shirley, NY 11967, USA

<b>Notes</b>	Best use within three months from the date of receipt of this protein.
<b>Storage</b>	Store at -80 centigrade. Aliquot to avoid repeated freezing and thawing.
<b>Storage Buffer</b>	50 mM Tris-HCl, 10 mM reduced Glutathione, pH=8.0 in the elution buffer.

## GENE INFORMATION

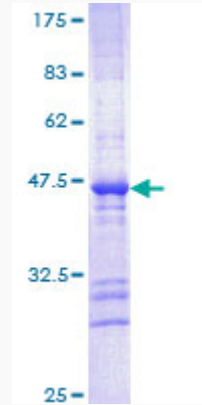
<b>Gene Name</b>	CDH22 cadherin 22 [ Homo sapiens (human) ]
<b>Official Symbol</b>	CDH22
<b>Synonyms</b>	CDH22; cadherin 22; C20orf25; dJ998H6.1; cadherin-22; PB-cadherin; cadherin 22, type 2; cadherin-like 22; ortholog of rat PB-cadherin; pituitary and brain cadherin
<b>Gene ID</b>	64405
<b>mRNA Refseq</b>	NM_021248
<b>Protein Refseq</b>	NP_067071
<b>MIM</b>	609920
<b>UniProt ID</b>	Q9UJ99

 Tel: 1-631-559-9269 1-516-512-3133

 Email: [info@creative-biomart.com](mailto:info@creative-biomart.com)  Fax: 1-631-938-8127

 45-1 Ramsey Road, Shirley, NY 11967, USA

**Quality Control  
Testing**



12.5% SDS-PAGE Stained with Coomassie Blue.

 Tel: 1-631-559-9269 1-516-512-3133

 Email: [info@creative-biomart.com](mailto:info@creative-biomart.com)  Fax: 1-631-938-8127

 45-1 Ramsey Road, Shirley, NY 11967, USA