

## Recombinant Human CDH23 Protein, GST-Tagged

**Cat. No.** CDH23-0987H    **Lot. No.** (See product label)

### SPECIFICATION

<b>Product Overview</b>	Human CDH23 partial ORF (NP_071407, 29 a.a. - 114 a.a.) recombinant protein with GST-tag at N-terminal.
<b>Species</b>	Human
<b>Source</b>	Wheat Germ
<b>Description</b>	This gene is a member of the cadherin superfamily, whose genes encode calcium dependent cell-cell adhesion glycoproteins. The encoded protein is thought to be involved in stereocilia organization and hair bundle formation. The gene is located in a region containing the human deafness loci DFNB12 and USH1D. Usher syndrome 1D and nonsyndromic autosomal recessive deafness DFNB12 are caused by allelic mutations of this cadherin-like gene. Upregulation of this gene may also be associated with breast cancer. Alternative splice variants encoding different isoforms have been described. [provided by RefSeq, May 2013]
<b>Molecular Mass</b>	35.2 kDa
<b>AA Sequence</b>	PFFTNHFFDITYLLISEDTPVGSSVTQLLAQDMDNDPLVFGVSGEEASRFFAVEPDTG VWVLRQPLDRETKSEFTVEFSVSDHQGVI
<b>Applications</b>	Enzyme-linked Immunoabsorbent Assay Western Blot (Recombinant protein) Antibody Production Protein Array

 Tel: 1-631-559-9269    1-516-512-3133

 Email: [info@creative-biomart.com](mailto:info@creative-biomart.com)     Fax: 1-631-938-8127

 45-1 Ramsey Road, Shirley, NY 11967, USA

**Storage** Store at -80 centigrade. Aliquot to avoid repeated freezing and thawing.

**Storage Buffer** 50 mM Tris-HCl, 10 mM reduced Glutathione, pH=8.0 in the elution buffer.

## GENE INFORMATION

**Gene Name** [CDH23 cadherin-related 23 \[ Homo sapiens \]](#)

**Official Symbol** [CDH23](#)

**Synonyms** CDH23; cadherin-related 23; cadherin related 23, cadherin like 23, DFNB12, USH1D; cadherin-23; cadherin related family member 23; CDHR23; otocadherin; cadherin-like 23; cadherin-related family member 23; USH1D; FLJ00233; FLJ36499; KIAA1774; KIAA1812; MGC102761; DKFZp434P2350;

**Gene ID** [64072](#)

**mRNA Refseq** [NM\\_001171930](#)

**Protein Refseq** [NP\\_001165401](#)

**MIM** [605516](#)

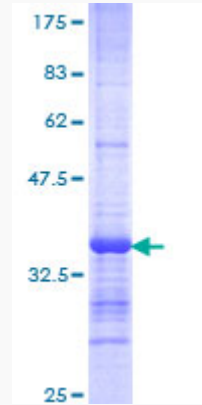
**UniProt ID** [Q9H251](#)

 Tel: 1-631-559-9269 1-516-512-3133

 Email: [info@creative-biomart.com](mailto:info@creative-biomart.com)  Fax: 1-631-938-8127

 45-1 Ramsey Road, Shirley, NY 11967, USA

**Quality Control  
Testing**



12.5% SDS-PAGE Stained with Coomassie Blue.

 Tel: 1-631-559-9269 1-516-512-3133

 Email: [info@creative-biomart.com](mailto:info@creative-biomart.com)  Fax: 1-631-938-8127

 45-1 Ramsey Road, Shirley, NY 11967, USA