

Recombinant Human CDH23 Protein, MYC/DDK-tagged, C13 and N15-labeled

Cat. No. CDH23-429H **Lot. No.** (See product label)

SPECIFICATION

Product Overview	CDH23 MS Standard C13 and N15-labeled recombinant protein (NP_443068) with a C-terminal MYC/DDK tag, was expressed in HEK293 cells.
Species	Human
Source	HEK293
Description	This gene is a member of the cadherin superfamily, whose genes encode calcium dependent cell-cell adhesion glycoproteins. The encoded protein is thought to be involved in stereocilia organization and hair bundle formation. The gene is located in a region containing the human deafness loci DFNB12 and USH1D. Usher syndrome 1D and nonsyndromic autosomal recessive deafness DFNB12 are caused by allelic mutations of this cadherin-like gene. Upregulation of this gene may also be associated with breast cancer. Alternative splice variants encoding different isoforms have been described. [provided by RefSeq, May 2013]
Molecular Mass	58.4 kDa
AA Sequence	MGRHVATSCHVAWLLVLISGCWGQVNRLPFFTNNHFFDTYLLISEDTPVGSSVTQLLA QDMDNDPLVFGVSGEEASRFFAVEPDTGVVWLRQPLDRETKSEFTVEFSVSDHQG VITRKVNIQVGDVNDNAPTFHNQPYSVRIPENTPVGTPIFIVNATDPDLGAGGSVLYS FQPPSQFFAIDSARGIVTVIRELDYETTQAYQLTVNATDQDKTRPLSTLANLAIITDVQ DMDPIFINLPYSTNIYEHSPPGTTVRIITAIQDKGRPRGIGYTIVSGNTNSIFALDYISG

 Tel: 1-631-559-9269 1-516-512-3133

 Email: info@creative-biomart.com  Fax: 1-631-938-8127

 45-1 Ramsey Road, Shirley, NY 11967, USA

VLTNGLLDRENPLYSHGFILTVKGTENDDRTPSDATVTTTFNILVIDINDNAPEFNS
 SEYSVAITELAQVGFALPLFIQVVDKDENLGLNSMFEVYLVGNNSHHFIISPTSVQGK
 ADIRIRVAIPLDYETVDRYDFDLFANESVPDHVGYAKVKITLINENDNRPIFSQPLYNIS
 LYENVTVGTSVLTVLVSPRFTAGPLSSPGPTVVRHPEGFCPRDLSNQGRRHPQIPEL
 CLLVYTRTRPLEQKLISEEDLAANDILDYKDDDDKV

Purity > 80% as determined by SDS-PAGE and Coomassie blue staining

Stability Stable for 3 months from receipt of products under proper storage and handling conditions.

Storage Store at -80 centigrade. Avoid repeated freeze-thaw cycles.

Concentration 50 µg/mL as determined by BCA

Storage Buffer 100 mM glycine, 25 mM Tris-HCl, pH 7.3.

GENE INFORMATION

Gene Name [CDH23 cadherin-related 23 \[Homo sapiens \(human\) \]](#)

Official Symbol [CDH23](#)

Synonyms CDH23; cadherin-related 23; cadherin related 23, cadherin like 23, DFNB12, USH1D; cadherin-23; cadherin related family member 23; CDHR23; otocadherin; cadherin-like 23; cadherin-related family member 23; USH1D; FLJ00233; FLJ36499; KIAA1774; KIAA1812; MGC102761; DKFZp434P2350;

Gene ID [64072](#)

mRNA Refseq [NM_052836](#)

 Tel: 1-631-559-9269 1-516-512-3133

 Email: info@creative-biomart.com  Fax: 1-631-938-8127

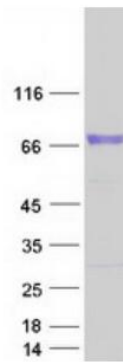
 45-1 Ramsey Road, Shirley, NY 11967, USA

Protein Refseq NP_443068

MIM 605516

UniProt ID Q9H251

SDS-PAGE



 Tel: 1-631-559-9269 1-516-512-3133

 Email: info@creative-biomart.com  Fax: 1-631-938-8127

 45-1 Ramsey Road, Shirley, NY 11967, USA