

Recombinant Human CDH3 Protein (Glu25-Gly654), C-His-tagged

Cat. No. CDH3-0272H Lot. No. (See product label)

SPECIFICATION

Product Overview	Recombinant human CDH3 (Glu25-Gly654) was fused with the C-terminal His tag and was expressed in Mammalian cells.
Species	Human
Source	Mammalian Cells
ProteinLength	Glu25-Gly654
Form	Lyophilized powder/frozen liquid
Molecular Mass	69.3 kDa
Purity	>90% as determined by SDS-PAGE
Notes	For research use only.
Storage	Use a manual defrost freezer and avoid repeated freeze thaw cycles. Store at 2 to 8 centigrade for one week. Store at -20 to -80 centigrade for twelve months from the date of receipt.
Storage Buffer	Supplied as solution form in PBS or lyophilized from PBS.
Reconstitution	Reconstitute in sterile water for a stock solution.

 Tel: 1-631-559-9269 1-516-512-3133

 Email: info@creative-biomart.com  Fax: 1-631-938-8127

 45-1 Ramsey Road, Shirley, NY 11967, USA

Shipping

They are shipped out with dry ice/blue ice unless customers require otherwise.

GENE INFORMATION**Gene Name**

CDH3 cadherin 3, type 1, P-cadherin (placental) [Homo sapiens (human)]

Official Symbol

CDH3

Synonyms

CDH3; cadherin 3, type 1, P-cadherin (placental); cadherin 3, P cadherin (placental); cadherin-3; CDHP; PCAD; calcium-dependent adhesion protein, placental; HJMD;

Gene ID

1001

mRNA Refseq

NM_001793

Protein Refseq

NP_001784

MIM

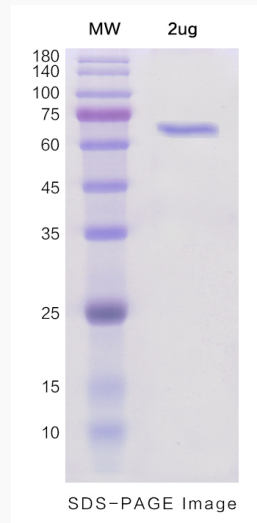
114021

UniProt ID

P22223

 Tel: 1-631-559-9269 1-516-512-3133 Email: info@creative-biomart.com  Fax: 1-631-938-8127 45-1 Ramsey Road, Shirley, NY 11967, USA

SDS-PAGE



 Tel: 1-631-559-9269 1-516-512-3133

 Email: info@creative-biomart.com  Fax: 1-631-938-8127

 45-1 Ramsey Road, Shirley, NY 11967, USA