

Recombinant Human CDH3 Protein, GST-Tagged

Cat. No. CDH3-0989H Lot. No. (See product label)

SPECIFICATION

Product Overview	Human CDH3 full-length ORF (AAH41846.1, 1 a.a. - 829 a.a.) recombinant protein with GST-tag at N-terminal.
Species	Human
Source	Wheat Germ
Description	<p>This gene encodes a classical cadherin of the cadherin superfamily. Alternative splicing results in multiple transcript variants, at least one of which encodes a preproprotein that is proteolytically processed to generate the mature glycoprotein. This calcium-dependent cell-cell adhesion protein is comprised of five extracellular cadherin repeats, a transmembrane region and a highly conserved cytoplasmic tail. This gene is located in a gene cluster in a region on the long arm of chromosome 16 that is involved in loss of heterozygosity events in breast and prostate cancer. In addition, aberrant expression of this protein is observed in cervical adenocarcinomas. Mutations in this gene are associated with hypotrichosis with juvenile macular dystrophy and ectodermal dysplasia, ectrodactyly, and macular dystrophy syndrome (EEMS). [provided by RefSeq, Nov 2015]</p>
Molecular Mass	117.9 kDa
AA Sequence	<p>MGLPRGPLASLLLLQVCWLQCAASEPCRAVFREA EVTLEAGGAEQEPGQALGKVF MGCPGQEPALFSTDND DFTVRNGETVQERRSLKERNPLKIFPSKRILRRHKRDWVV APISVPENGGKGFPPQRLNQLKSNKDRDTKIFYSITGPGADSPPEGVFAVEKETGWLL</p>

 Tel: 1-631-559-9269 1-516-512-3133

 Email: info@creative-biomart.com  Fax: 1-631-938-8127

 45-1 Ramsey Road, Shirley, NY 11967, USA

LNKPLDREEIAKYELFGHAVSENGASVEDPMNISIIVTDQNDHKPKFTQDTRFGSVLE
 GVLPGTSVMQMTATDEDDAIYTYNGVVAYSIHQSQEPKDPHDLMTIHRSTGTISVISS
 GLDREKVPEYTLTIQATDMDGDGSTTTAVAVVEILDANDNAPMFDPPQKYEAHVPEN
 AVGHEVQRLTVTDLDAPNSPAWRATYLIMGGDDGDHFTITTHPESNQGILTTRKGLD
 FEAKNQHTLYVEVTNEAPFVLKLPSTATIVVHVEDVNEAPVFVPPSKVVEVQEGIPT
 GEPVCVYTAEDPDKENQKISYRILRDPAGWLAMPDPSGQVTAVGTLTREDEQFVRN
 NIYEVMLAMDNGSPPTTGTGTTTTLIDVNDHGPVPEPRQITICNQSPVRQVLNITD
 KDLSPTSPFQAQLTDDSDIYWTAEVNEEGDTVVLSSLKFLKQDQTYDVHLSLSDHGN
 KEQLTVIRATVCDCHGHVETCPGPWKGGFILPVLGAVLALLFLLLVLLLVRKKRRIKE
 PLLLPEDDTRDNVFYYGEEGGGEEDQDYDITQLHRGLEARPEVLRNDVAPTIPTP
 MYRPRPANPDEIGNFIIENLKAANTDPTAPPYDTLLVFDYEGSGSDAASLSSLTSSAS
 DQDQDYDYLNEWGSRFKKLADMYGGGEDD

Applications

Enzyme-linked Immunoabsorbent Assay
 Western Blot (Recombinant protein)
 Antibody Production
 Protein Array

Storage

Store at -80 centigrade. Aliquot to avoid repeated freezing and thawing.

Storage Buffer

50 mM Tris-HCl, 10 mM reduced Glutathione, pH=8.0 in the elution buffer.

GENE INFORMATION

Gene Name

CDH3 cadherin 3, type 1, P-cadherin (placental) [Homo sapiens]

Official Symbol

CDH3

Synonyms

CDH3; cadherin 3, type 1, P-cadherin (placental); cadherin 3, P cadherin (placental);
 cadherin-3; CDHP; PCAD; calcium-dependent adhesion protein, placental; HJMD;

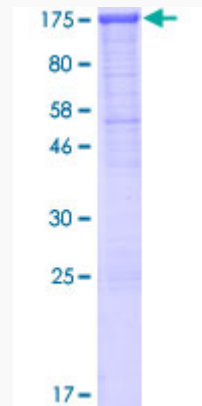
 Tel: 1-631-559-9269 1-516-512-3133

 Email: info@creative-biomart.com  Fax: 1-631-938-8127

 45-1 Ramsey Road, Shirley, NY 11967, USA

Gene ID	1001
mRNA Refseq	NM_001793
Protein Refseq	NP_001784
MIM	114021
UniProt ID	P22223

**Quality Control
Testing**



12.5% SDS-PAGE Stained with Coomassie Blue.

 Tel: 1-631-559-9269 1-516-512-3133

 Email: info@creative-biomart.com  Fax: 1-631-938-8127

 45-1 Ramsey Road, Shirley, NY 11967, USA