

Recombinant Human CDH5 Protein, GST-Tagged

Cat. No. CDH5-0991H Lot. No. (See product label)

SPECIFICATION

Product Overview	Human CDH5 partial ORF (NP_001786, 51 a.a. - 150 a.a.) recombinant protein with GST-tag at N-terminal.
Species	Human
Source	Wheat Germ
Description	<p>This gene encodes a classical cadherin of the cadherin superfamily. The encoded preproprotein is proteolytically processed to generate the mature glycoprotein. This calcium-dependent cell-cell adhesion molecule is comprised of five extracellular cadherin repeats, a transmembrane region and a highly conserved cytoplasmic tail. Functioning as a classical cadherin by imparting to cells the ability to adhere in a homophilic manner, this protein plays a role in endothelial adherens junction assembly and maintenance. This gene is located in a gene cluster in a region on the long arm of chromosome 16 that is involved in loss of heterozygosity events in breast and prostate cancer. [provided by RefSeq, Nov 2015]</p>
Molecular Mass	36.74 kDa
AA Sequence	WNQMHIDE EKNTSLPHHVGVGKIKSSVSRKNAKYLLKGEYVGVKVFVRVDAETGDVFAIER LDRENISEYHLTAIVVDKDTGENLETPSSFTIKVHVDVNDNWPV
Applications	<p>Enzyme-linked Immunoabsorbent Assay</p> <p>Western Blot (Recombinant protein)</p> <p>Antibody Production</p>

 Tel: 1-631-559-9269 1-516-512-3133

 Email: info@creative-biomart.com  Fax: 1-631-938-8127

 45-1 Ramsey Road, Shirley, NY 11967, USA

Protein Array

Storage Store at -80 centigrade. Aliquot to avoid repeated freezing and thawing.

Storage Buffer 50 mM Tris-HCl, 10 mM reduced Glutathione, pH=8.0 in the elution buffer.

GENE INFORMATION

Gene Name CDH5 cadherin 5, type 2 (vascular endothelium) [Homo sapiens]

Official Symbol CDH5

Synonyms CDH5; cadherin 5, type 2 (vascular endothelium); cadherin 5, type 2, VE cadherin (vascular epithelium); cadherin-5; 7B4; CD144; VE cadherin; 7B4 antigen; VE-cadherin; cd144 antigen; endothelial-specific cadherin; vascular endothelial cadherin; cadherin 5, type 2, VE-cadherin (vascular epithelium); FLJ17376;

Gene ID 1003

mRNA Refseq NM_001795

Protein Refseq NP_001786

MIM 601120

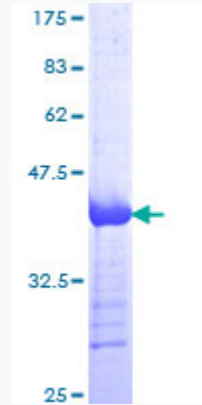
UniProt ID P33151

 Tel: 1-631-559-9269 1-516-512-3133

 Email: info@creative-biomart.com  Fax: 1-631-938-8127

 45-1 Ramsey Road, Shirley, NY 11967, USA

**Quality Control
Testing**



12.5% SDS-PAGE Stained with Coomassie Blue.

 Tel: 1-631-559-9269 1-516-512-3133

 Email: info@creative-biomart.com  Fax: 1-631-938-8127

 45-1 Ramsey Road, Shirley, NY 11967, USA