

Recombinant Human CDH6 Protein (Thr22-Ala615), C-His-tagged

Cat. No. CDH6-0201H Lot. No. (See product label)

SPECIFICATION

Product Overview	Recombinant human CDH6 (Thr22-Ala615) was fused with the C-terminal His tag and was expressed in Mammalian cells.
Species	Human
Source	Mammalian Cells
ProteinLength	Thr22-Ala615
Form	Lyophilized powder/frozen liquid
Molecular Mass	65.34 kDa
Purity	>90% as determined by SDS-PAGE
Notes	For research use only.
Storage	Use a manual defrost freezer and avoid repeated freeze thaw cycles. Store at 2 to 8 centigrade for one week. Store at -20 to -80 centigrade for twelve months from the date of receipt.
Storage Buffer	Supplied as solution form in PBS or lyophilized from PBS.
Reconstitution	Reconstitute in sterile water for a stock solution.

 Tel: 1-631-559-9269 1-516-512-3133

 Email: info@creative-biomart.com  Fax: 1-631-938-8127

 45-1 Ramsey Road, Shirley, NY 11967, USA

Shipping

They are shipped out with dry ice/blue ice unless customers require otherwise.

GENE INFORMATION**Gene Name**

CDH6 cadherin 6, type 2, K-cadherin (fetal kidney) [Homo sapiens (human)]

Official Symbol

CDH6

Synonyms

CDH6; cadherin 6, type 2, K-cadherin (fetal kidney); cadherin-6; K Cadherin; CAD6; KCAD; FLJ14176; DKFZp564N1116;

Gene ID

1004

mRNA Refseq

NM_004932

Protein Refseq

NP_004923

MIM

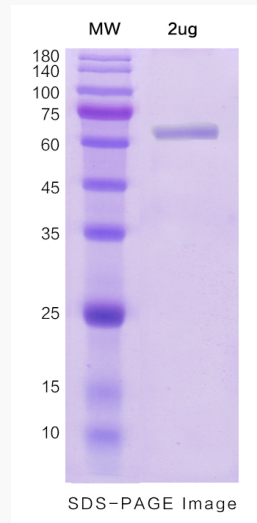
603007

UniProt ID

P55285

 Tel: 1-631-559-9269 1-516-512-3133 Email: info@creative-biomart.com  Fax: 1-631-938-8127 45-1 Ramsey Road, Shirley, NY 11967, USA

SDS-PAGE



 Tel: 1-631-559-9269 1-516-512-3133

 Email: info@creative-biomart.com  Fax: 1-631-938-8127

 45-1 Ramsey Road, Shirley, NY 11967, USA