

## Recombinant Human CDH6 Protein, GST-Tagged

Cat. No. CDH6-0992H Lot. No. (See product label)

### SPECIFICATION

<b>Product Overview</b>	Human CDH6 full-length ORF (AAH00019.1, 1 a.a. - 663 a.a.) recombinant protein with GST-tag at N-terminal.
<b>Species</b>	Human
<b>Source</b>	Wheat Germ
<b>Description</b>	This gene encodes a member of the cadherin superfamily. Cadherins are membrane glycoproteins that mediate homophilic cell-cell adhesion and play critical roles in cell differentiation and morphogenesis. The encoded protein is a type II cadherin and may play a role in kidney development as well as endometrium and placenta formation. Decreased expression of this gene may be associated with tumor growth and metastasis. [provided by RefSeq, May 2011]
<b>Molecular Mass</b>	100.3 kDa
<b>AA Sequence</b>	MRTYRYFLLLFWVGQPYPTLSTPLSKRTSGFPAKKRALELSGNSKNELNRSKRSMWNQFFLLEEYTGSDYQYVGKLSHQDRGDGSLKYILSGDGAGDLFIINENTGDIQATKRLDREEKPVYILRAQAINRRTGRPVEPESEFIIKIHDINDNEPIFTKEVYTATVPEMSDVGTFVQVTATDADDPTYGNSAKVVYSILQGQPYFSVESETGIIKTALLNMDRENREQYQVVIQAKDMGGQMGGLSGTTTTVNITLTDVNDNPPRFPQSTYQFKTPPESSPPGTPIGRIKASDADVGENAEIEYSITDGEGLDMFDVITDQETQEGIIIVKLLDFEKKKVYTLKVEASNPYVEPRFLYLGPFKDSATVRIVVEDVDEPPVFSKLAYILQIREDAQINTTIGSVTAQDPDAARNPVKYSVDRHTDMDRIFNIDSGNGSIFTSKLLDRETLWLNITVIATEIN

 Tel: 1-631-559-9269 1-516-512-3133

 Email: [info@creative-biomart.com](mailto:info@creative-biomart.com)  Fax: 1-631-938-8127

 45-1 Ramsey Road, Shirley, NY 11967, USA

NPKQSSRVPLYIKVLDVNDNAPEFAEFYETFVCEKAKADQLIQLTHAVDKDDPYSGH  
 QFSFSLAPEAASGSNFTIQDNKDNTAGILTRKNGYNRHEMSTYLLPVVISDNDYPVQ  
 SSTGTVTVRVACDHHGNMQSCHAEALIHPTGLSTGALVAILLCIVILLGKLVLPASYL  
 PMVRGSHCYCDTLDLSASPIKAYSLI

**Applications**  
 Enzyme-linked Immunoabsorbent Assay  
 Western Blot (Recombinant protein)  
 Antibody Production  
 Protein Array

**Storage** Store at -80 centigrade. Aliquot to avoid repeated freezing and thawing.

**Storage Buffer** 50 mM Tris-HCl, 10 mM reduced Glutathione, pH=8.0 in the elution buffer.

## GENE INFORMATION

**Gene Name** CDH6 cadherin 6, type 2, K-cadherin (fetal kidney) [ Homo sapiens ]

**Official Symbol** CDH6

**Synonyms** CDH6; cadherin 6, type 2, K-cadherin (fetal kidney); cadherin-6; K Cadherin; CAD6; KCAD; FLJ14176; DKFZp564N1116;

**Gene ID** 1004

**mRNA Refseq** NM\_004932

**Protein Refseq** NP\_004923

**MIM** 603007

 Tel: 1-631-559-9269 1-516-512-3133

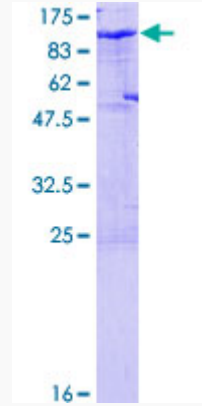
 Email: [info@creative-biomart.com](mailto:info@creative-biomart.com)  Fax: 1-631-938-8127

 45-1 Ramsey Road, Shirley, NY 11967, USA

UniProt ID

P55285

Quality Control  
Testing



12.5% SDS-PAGE Stained with Coomassie Blue.

 Tel: 1-631-559-9269 1-516-512-3133

 Email: [info@creative-biomart.com](mailto:info@creative-biomart.com)  Fax: 1-631-938-8127

 45-1 Ramsey Road, Shirley, NY 11967, USA