

Active Recombinant Human CDH6 protein, His-tagged

Cat. No. CDH6-1255H Lot. No. (See product label)

SPECIFICATION

Product Overview	Active Recombinant Human CDH6/K-Cadherin Protein is produced by HEK293 cells expression system. The target protein is expressed with sequence (Thr 19 - Ala 615) of human K-Cadherin (Accession #NP_004923.1) fused with a 6xHis tag at the C-terminus.
Species	Human
Source	HEK293
ProteinLength	Thr 19 - Ala 615
Form	Lyophilized from a 0.22 µm filtered solution of PBS, pH 7.4.
Bio-activity	Measured by its binding ability in a functional ELISA. Immobilized Human CDH6 at 1µg/mL (100 µL/well) can bind CDH6?Mouse?mAb with a linear range of 0.05-6.31 ng/mL.
Molecular Mass	95-100 kDa
Endotoxin	< 0.1 EU/µg of the protein by LAL method.
Purity	> 95% by SDS-PAGE.
Storage	Store the lyophilized protein at -20°C to -80 °C for long term. After reconstitution, the protein solution is stable at -20 °C for 3 months, at 2-8 °C for

 Tel: 1-631-559-9269 1-516-512-3133

 Email: info@creative-biomart.com  Fax: 1-631-938-8127

 45-1 Ramsey Road, Shirley, NY 11967, USA



up to 1 week.

Reconstitution

Reconstitute to a concentration of 0.1-0.5 mg/mL in sterile distilled water.

GENE INFORMATION

Gene Name

CDH6 cadherin 6, type 2, K-cadherin (fetal kidney) [Homo sapiens]

Official Symbol

CDH6

Synonyms

CDH6; cadherin 6, type 2, K-cadherin (fetal kidney); cadherin-6; K Cadherin; CAD6; KCAD; FLJ14176; DKFZp564N1116;

Gene ID

1004

mRNA Refseq

NM_004932

Protein Refseq

NP_004923

MIM

603007

UniProt ID

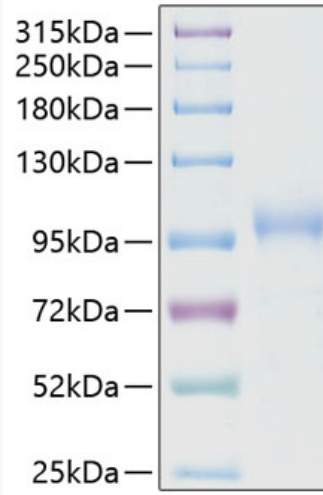
P55285

 Tel: 1-631-559-9269 1-516-512-3133

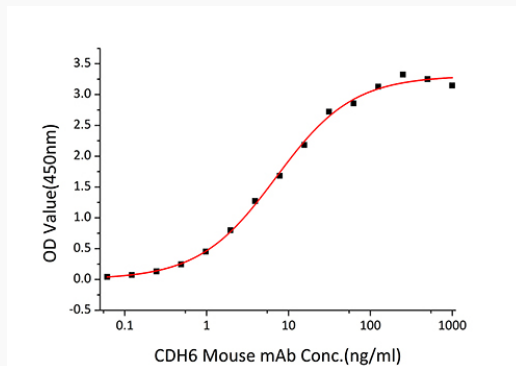
 Email: info@creative-biomart.com  Fax: 1-631-938-8127

 45-1 Ramsey Road, Shirley, NY 11967, USA

SDS-PAGE



Activity



 Tel: 1-631-559-9269 1-516-512-3133

 Email: info@creative-biomart.com  Fax: 1-631-938-8127

 45-1 Ramsey Road, Shirley, NY 11967, USA