

## Active Recombinant Human CDH6 protein, His-tagged

Cat. No. CDH6-668H Lot. No. (See product label)

### SPECIFICATION

<b>Product Overview</b>	Active Recombinant Human CDH6 protein(P55285-1)(Thr19-Ala615) is expressed from HEK293 with His tag at the C-Terminus.
<b>Species</b>	Human
<b>Source</b>	HEK293
<b>ProteinLength</b>	19-615 aa
<b>Form</b>	Lyophilized from 0.22 µm filtered solution in PBS (pH 7.4).
<b>Bio-activity</b>	Immobilized Anti-CDH6 antibody, hFc Tag at 5µg/ml (100µl/well) on the plate. Dose response curve for Human CDH6, His Tag with the EC50 of 1.85µg/ml determined by ELISA.
<b>Molecular Mass</b>	The protein has a predicted MW of 67.48 kDa. Due to glycosylation, the protein migrates to 75-95 kDa based on Bis-Tris PAGE result.
<b>Endotoxin</b>	Less than 1 EU per µg by the LAL method.
<b>Purity</b>	> 95% as determined by Bis-Tris PAGE
<b>Storage</b>	-20 to -80°C for 12 months as supplied from date of receipt. -80°C for 3 months after reconstitution. Recommend to aliquot the protein into smaller quantities for optimal storage. Please minimize freeze-thaw cycles.

 Tel: 1-631-559-9269 1-516-512-3133

 Email: [info@creative-biomart.com](mailto:info@creative-biomart.com)  Fax: 1-631-938-8127

 45-1 Ramsey Road, Shirley, NY 11967, USA

**Reconstitution** Dissolve the lyophilized protein in distilled water.

## GENE INFORMATION

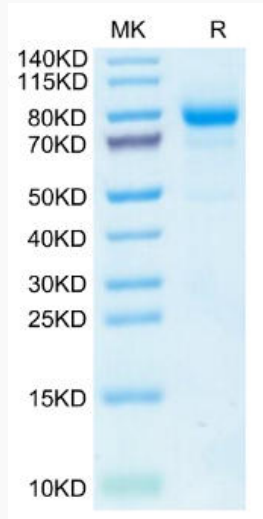
<b>Gene Name</b>	CDH6 cadherin 6, type 2, K-cadherin (fetal kidney) [ Homo sapiens ]
<b>Official Symbol</b>	CDH6
<b>Synonyms</b>	CDH6; cadherin 6, type 2, K-cadherin (fetal kidney); cadherin-6; K Cadherin; CAD6; KCAD; FLJ14176; DKFZp564N1116;
<b>Gene ID</b>	1004
<b>mRNA Refseq</b>	NM_004932
<b>Protein Refseq</b>	NP_004923
<b>MIM</b>	603007
<b>UniProt ID</b>	P55285

 Tel: 1-631-559-9269 1-516-512-3133

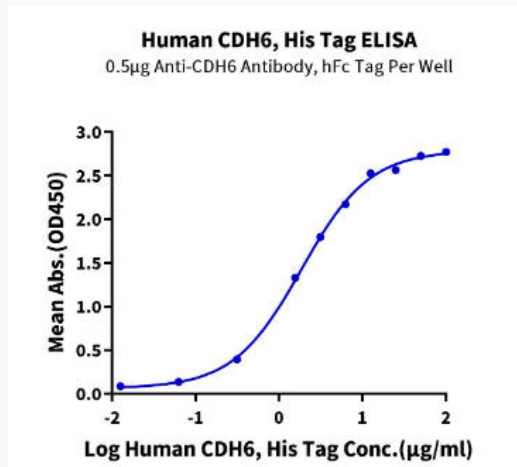
 Email: [info@creative-biomart.com](mailto:info@creative-biomart.com)  Fax: 1-631-938-8127

 45-1 Ramsey Road, Shirley, NY 11967, USA

**Bis-Tris PAGE**



**ELISA Data**



 Tel: 1-631-559-9269 1-516-512-3133

 Email: [info@creative-biomart.com](mailto:info@creative-biomart.com)  Fax: 1-631-938-8127

 45-1 Ramsey Road, Shirley, NY 11967, USA