

# Recombinant Human CDH8 Protein (Ala30-Met621), C-His-tagged

Cat. No. CDH8-0271H Lot. No. (See product label)

## SPECIFICATION

<b>Product Overview</b>	Recombinant human CDH8 (Ala30-Met621) was fused with the C-terminal His tag and was expressed in Mammalian cells.
<b>Species</b>	Human
<b>Source</b>	Mammalian Cells
<b>ProteinLength</b>	Ala30-Met621
<b>Form</b>	Lyophilized powder/frozen liquid
<b>Molecular Mass</b>	65.12 kDa
<b>Purity</b>	>90% as determined by SDS-PAGE
<b>Notes</b>	For research use only.
<b>Storage</b>	Use a manual defrost freezer and avoid repeated freeze thaw cycles. Store at 2 to 8 centigrade for one week. Store at -20 to -80 centigrade for twelve months from the date of receipt.
<b>Storage Buffer</b>	Supplied as solution form in PBS or lyophilized from PBS.
<b>Reconstitution</b>	Reconstitute in sterile water for a stock solution.

 Tel: 1-631-559-9269 1-516-512-3133

 Email: [info@creative-biomart.com](mailto:info@creative-biomart.com)  Fax: 1-631-938-8127

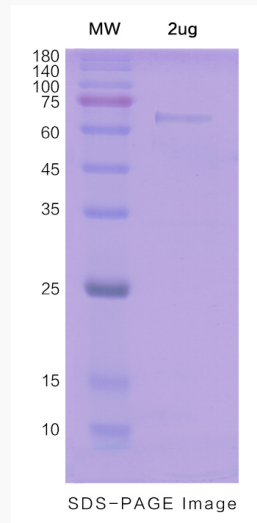
 45-1 Ramsey Road, Shirley, NY 11967, USA

**Shipping**

They are shipped out with dry ice/blue ice unless customers require otherwise.

**GENE INFORMATION****Gene Name** [CDH8 cadherin 8, type 2 \[ Homo sapiens \(human\) \]](#)**Official Symbol** [CDH8](#)**Synonyms** CDH8; cadherin 8, type 2; cadherin-8; Nbla04261;**Gene ID** [1006](#)**mRNA Refseq** [NM\\_001796](#)**Protein Refseq** [NP\\_001787](#)**MIM** [603008](#)**UniProt ID** [P55286](#) Tel: 1-631-559-9269 1-516-512-3133 Email: [info@creative-biomart.com](mailto:info@creative-biomart.com)  Fax: 1-631-938-8127 45-1 Ramsey Road, Shirley, NY 11967, USA

**SDS-PAGE**



 Tel: 1-631-559-9269 1-516-512-3133

 Email: [info@creative-biomart.com](mailto:info@creative-biomart.com)  Fax: 1-631-938-8127

 45-1 Ramsey Road, Shirley, NY 11967, USA