

Recombinant Human CDH8 Protein, GST-Tagged

Cat. No. CDH8-0995H **Lot. No.** (See product label)

SPECIFICATION

Product Overview Human CDH8 full-length ORF (NP_001787.2, 1 a.a. - 799 a.a.) recombinant protein with GST-tag at N-terminal.

Species Human

Source Wheat Germ

Description

This gene encodes a type II classical cadherin from the cadherin superfamily, integral membrane proteins that mediate calcium-dependent cell-cell adhesion. Mature cadherin proteins are composed of a large N-terminal extracellular domain, a single membrane-spanning domain, and a small, highly conserved C-terminal cytoplasmic domain. The extracellular domain consists of 5 subdomains, each containing a cadherin motif, and appears to determine the specificity of the protein's homophilic cell adhesion activity. Type II (atypical) cadherins are defined based on their lack of a HAV cell adhesion recognition sequence specific to type I cadherins. This particular cadherin is expressed in brain and is putatively involved in synaptic adhesion, axon outgrowth and guidance. [provided by RefSeq, Jul 2008]

Molecular Mass 114.7 kDa

AA Sequence

MPERLAEMLLDLWTPLIILWITLPPCIYMAPMNQSQVLMMSGSPLELNSLGEEQRILNR
SKRGVWNQMFVLEEFSGPEPILVGRLLHTDLDPGSKKIKYILSGDGAGTIFQINDVT
GDIHAIKRLDREEKAEYTLTAQAVDWETSKPLEPPSEFIIKVQDINDNAPEFLNGPYH
ATVPEMSILGTSVTNVTATDADDPVYGNSAKLVYSILEGQPYFSIEPETAIKLTALPNM

 Tel: 1-631-559-9269 1-516-512-3133

 Email: info@creative-biomart.com  Fax: 1-631-938-8127

 45-1 Ramsey Road, Shirley, NY 11967, USA

DREAKEEYLVVIQAKDMGGHSGGLSGTTTTLVTLTDVNDNPPKFAQSLYHFSVPED
 VVLGTAIGRVKANDQDIGENAQSSYDIIDGDGTALFEITSDAQAQDGIIRLRKPLDFET
 KKSYYTLKVEAANVHIDPRFSGRGPFKDTATVKIVVEDADEPPVFSSPTYLLEVHENAA
 LNSVIGQVTARDPDITSSPIRFSIDRHTDLERQFNINADDGKITLATPLDRELSVWHNIT
 IIATEIRNHSQISRVPVAIKVLDVNDNAPEFASEYEAFLENGKPGQVIQTVSAMDKDD
 PKNGHYFLYLLPEMVNNPNFTIKKNEDNSLSILAKHNGFNQRQKQEVYLLPIIISDSGN
 PPLSSTSTLTIRVCGCSNDGVVQSCNVEAYVLPIGLSMGALAILACIILLLVIVVLFVTL
 RRHKNEPLIIKDDDEDVRENIIRYDDEGGGEEDTEAFDIATLQNPDGINGFLPRKDIKPD
 LQFMPRQGLAPVPNGVDVDEFINVRLHEADNDPTAPPYDSIQIYGYEGRGSVAGSL
 SSLESTTSDSDQNFDYLSDWGPRFKRLGELYSVGESDKET

Applications	Enzyme-linked Immunoabsorbent Assay Western Blot (Recombinant protein) Antibody Production Protein Array
Storage	Store at -80 centigrade. Aliquot to avoid repeated freezing and thawing.
Storage Buffer	50 mM Tris-HCl, 10 mM reduced Glutathione, pH=8.0 in the elution buffer.

GENE INFORMATION

Gene Name	CDH8 cadherin 8, type 2 [Homo sapiens]
Official Symbol	CDH8
Synonyms	CDH8; cadherin 8, type 2; cadherin-8; Nbla04261;
Gene ID	1006
mRNA Refseq	NM_001796

 Tel: 1-631-559-9269 1-516-512-3133

 Email: info@creative-biomart.com  Fax: 1-631-938-8127

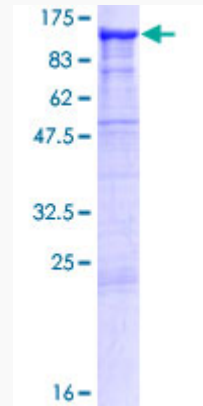
 45-1 Ramsey Road, Shirley, NY 11967, USA

Protein Refseq NP_001787

MIM 603008

UniProt ID P55286

**Quality Control
Testing**



12.5% SDS-PAGE Stained with Coomassie Blue.

 Tel: 1-631-559-9269 1-516-512-3133

 Email: info@creative-biomart.com  Fax: 1-631-938-8127

 45-1 Ramsey Road, Shirley, NY 11967, USA