

Recombinant Human CDH8 Protein, Myc/DDK-tagged, C13 and N15-labeled

Cat. No. CDH8-4940H **Lot. No.** (See product label)

SPECIFICATION

| | |
|-------------------------|---|
| Product Overview | CDH8 MS Standard C13 and N15-labeled recombinant protein (NP_001787) with a C-terminal MYC/DDK tag, was expressed in HEK293 cells. |
| Species | Human |
| Source | HEK293 |
| Description | This gene encodes a type II classical cadherin from the cadherin superfamily, integral membrane proteins that mediate calcium-dependent cell-cell adhesion. Mature cadherin proteins are composed of a large N-terminal extracellular domain, a single membrane-spanning domain, and a small, highly conserved C-terminal cytoplasmic domain. The extracellular domain consists of 5 subdomains, each containing a cadherin motif, and appears to determine the specificity of the protein's homophilic cell adhesion activity. Type II (atypical) cadherins are defined based on their lack of a HAV cell adhesion recognition sequence specific to type I cadherins. This particular cadherin is expressed in brain and is putatively involved in synaptic adhesion, axon outgrowth and guidance. |
| Molecular Mass | 88.25 kDa |
| AA Sequence | MPERLAEMLLDLWTPLIILWITLPPCIYMAPMNQSQVLMMSGSPLELNSLGEEQRILNR SKRGWVWNQMFVLEEFSGPEPILVGRLLHTDLDPGSKKIKYILSGDGAGTIFQINDVT GDIHAIKRLDREEKAEYTLTAQAVDWETSKPLEPPSEFIIKVQDINDNAPEFLNGPYH |

 Tel: 1-631-559-9269 1-516-512-3133

 Email: info@creative-biomart.com  Fax: 1-631-938-8127

 45-1 Ramsey Road, Shirley, NY 11967, USA

ATVPEMSILGTSVTNVTATDADDPVYGNSAKLVYSILEGQPYFSIEPETAIKLTALPNM
 DREAKEYLVVIQAKDMGGHSGGLSGTTTTLTVTLTDVNDNPPKFAQSLYHFSVPED
 VVLGTAIGRVKANDQDIGENAQSSYDIIDGDGTALFEITSDAQAQDGIIRLRKPLDFET
 KKSYYTLKVEAANVHIDPRFSGRGPFKDTATVKIVVEDADEPPVFSSPTYLLEVHENAA
 LNSVIGQVTARDPDITSSPIRFSIDRHTDLERQFNINADDGKITLATPLDRELSVWHNIT
 IIATEIRNHSQISRVPVAIKVLDVNDNAPEFASEYEAFLCENGKPGQVIQTVSAMDKDD
 PKNGHYFLYLLPEMVNNPNFTIKKNEDNSLSILAKHNGFNQRKQEVYLLPIIISDSGN
 PPLSSTSTLTIRVCGCSNDGVVQSCNVEAYVLPIGLSMGALAILACIILLLVIVVLFVTL
 RRHKNEPLIIKDDDEDVRENIIRYDDEGGGEEDTEAFDIATLQNPDGINGFLPRKDIKPD
 LQFMPRQGLAPVPNGVDVDEFINVRLHEADNDPTAPPYDSIQIYGYEGRGSVAGSL
 SSLESTTSDSDQNFDYLSDWGPRFKRLGELYSVGESDKETTRTRPLEQKLISEEDLA
 ANDILDYKDDDDKV

Purity > 80% as determined by SDS-PAGE and Coomassie blue staining

Stability Stable for 3 months from receipt of products under proper storage and handling conditions.

Storage Store at -80 centigrade. Avoid repeated freeze-thaw cycles.

Concentration 50 µg/mL as determined by BCA

Storage Buffer 100 mM glycine, 25 mM Tris-HCl, pH 7.3.

GENE INFORMATION

Gene Name CDH8 cadherin 8 [Homo sapiens (human)]

Official Symbol CDH8

Synonyms CDH8; cadherin 8, type 2; cadherin-8; Nbla04261;

 Tel: 1-631-559-9269 1-516-512-3133

 Email: info@creative-biomart.com  Fax: 1-631-938-8127

 45-1 Ramsey Road, Shirley, NY 11967, USA

Gene ID 1006

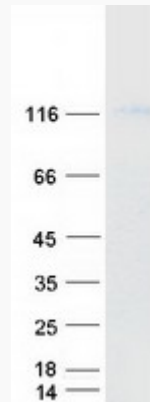
mRNA Refseq [NM_001796](#)

Protein Refseq [NP_001787](#)

MIM 603008

UniProt ID [P55286](#)

SDS-PAGE



 Tel: 1-631-559-9269 1-516-512-3133

 Email: info@creative-biomart.com  Fax: 1-631-938-8127

 45-1 Ramsey Road, Shirley, NY 11967, USA