

Recombinant Human CDHR2 Over-expression Lysate, C-Flag tagged

Cat. No. CDHR2-47HCL **Lot. No.** (See product label)

SPECIFICATION

Product Overview	<p>Transient overexpression lysate of cadherin-related family member 2 (CDHR2), transcript variant 2 with a C-Flag tag was expressed in HEK293T.</p> <p>Components:</p> <p>1 vial of 100 µg gene specific transient over-expression cell lysate in RIPA buffer 1 vial of 100 µg whole HEK293T cell lysate in RIPA buffer 1 vial of 250ul 2xSDS Sample Buffer (4% SDS, 125mM Tris-HCl pH6.8, 10% Glycerol, 0.002% Bromophenol blue, 100mM DTT)</p>
Species	Human
Source	HEK293
Description	<p>This gene is a member of the protocadherin family, which represents a subset of the larger cadherin superfamily. The members of the protocadherin family encode non-classical cadherins that function as calcium-dependent cell-cell adhesion molecules. This protocadherin represents a new candidate for tumor suppression. Alternatively spliced transcript variants that encode the same protein have been identified.</p>
Molecular Mass	141.4 kDa
Stability	Lysate samples are stable for 12 months from the date of receipt when stored at -80 centigrade.
Storage	Upon receiving, store the sample at -80 centigrade. Also after dilution, the protein

 Tel: 1-631-559-9269 1-516-512-3133

 Email: info@creative-biomart.com  Fax: 1-631-938-8127

 45-1 Ramsey Road, Shirley, NY 11967, USA

sample should be aliquoted and stored at -80 centigrade for long term storage. Avoid repeated freeze-thaw cycles.

Shipping The lysate is shipped with dry ice.

Reconstitution Lysate samples can be diluted with 2xSDS Sample Buffer provided.

GENE INFORMATION

Gene Name CDHR2 cadherin-related family member 2 [Homo sapiens (human)]

Official Symbol CDHR2

Synonyms CDHR2; cadherin-related family member 2; PCDH24, protocadherin 24; FLJ20124; FLJ20383; PC LKC; PCLKC; protocadherin LKC; protocadherin 24; protocadherin-24; PCDH24; MGC163154;

Gene ID 54825

mRNA Refseq NM_017675

Protein Refseq NP_060145

MIM 619713

UniProt ID Q9BYE9

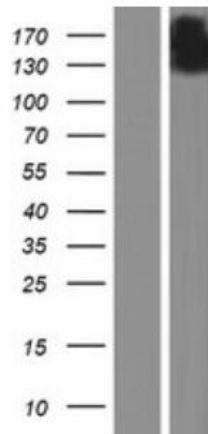
 Tel: 1-631-559-9269 1-516-512-3133

 Email: info@creative-biomart.com  Fax: 1-631-938-8127

 45-1 Ramsey Road, Shirley, NY 11967, USA



WB



Tel: 1-631-559-9269 1-516-512-3133

Email: info@creative-biomart.com Fax: 1-631-938-8127

45-1 Ramsey Road, Shirley, NY 11967, USA