

Recombinant Human CDHR5 Protein, GST-tagged

Cat. No. CDHR5-5752H Lot. No. (See product label)

SPECIFICATION

Product Overview	Human MUCDHL partial ORF (NP_068743, 27 a.a. - 125 a.a.) recombinant protein with GST-tag at N-terminal.
Species	Human
Source	Wheat Germ
Description	This gene is a novel mucin-like gene that is a member of the cadherin superfamily. While encoding nonpolymorphic tandem repeats rich in proline, serine and threonine similar to mucin proteins, the gene also contains sequence encoding calcium-binding motifs found in all cadherins. The role of the hybrid extracellular region and the specific function of this protein have not yet been determined. Alternative splicing has been identified, with observed variation resulting in the presence or absence of domains. In addition, splicing occurs in the 5 UTR but transcripts including these variations have not been described completely. [provided by RefSeq]
Molecular Mass	36.63 kDa
AA Sequence	AQYCSVNKDIFEVEENTNVTEPLVDIHVPEGQEVTLGALSTPFAFRIQGNQLFLNVTP DYEEKSLLEAQLLCQSGGTLVTQLRVFVSVLDVNDNAPEFP
Applications	Enzyme-linked Immunoabsorbent Assay Western Blot (Recombinant protein) Antibody Production Protein Array

 Tel: 1-631-559-9269 1-516-512-3133

 Email: info@creative-biomart.com  Fax: 1-631-938-8127

 45-1 Ramsey Road, Shirley, NY 11967, USA

Notes	Best use within three months from the date of receipt of this protein.
Storage	Store at -80 centigrade. Aliquot to avoid repeated freezing and thawing.
Storage Buffer	50 mM Tris-HCl, 10 mM reduced Glutathione, pH=8.0 in the elution buffer.

GENE INFORMATION

Gene Name	CDHR5 cadherin related family member 5 [Homo sapiens (human)]
Official Symbol	CDHR5
Synonyms	CDHR5; cadherin related family member 5; MLPCDH; MUCDHL; MUPCDH; MU-PCDH; cadherin-related family member 5; differentiation-associated catenin regulator; mu-protocadherin; mucin and cadherin-like protein
Gene ID	53841
mRNA Refseq	NM_001171968
Protein Refseq	NP_001165439
MIM	606839
UniProt ID	Q9HBB8

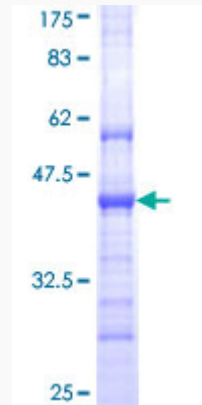
 Tel: 1-631-559-9269 1-516-512-3133

 Email: info@creative-biomart.com  Fax: 1-631-938-8127

 45-1 Ramsey Road, Shirley, NY 11967, USA

Quality Control

Testing:



12.5% SDS-PAGE Stained with Coomassie Blue.

 Tel: 1-631-559-9269 1-516-512-3133

 Email: info@creative-biomart.com  Fax: 1-631-938-8127

 45-1 Ramsey Road, Shirley, NY 11967, USA