

# Active Recombinant Full Length Human CDK1 Protein, DDK-tagged, Biotinylated

Cat. No. CDK1-3397HF Lot. No. (See product label)

## SPECIFICATION

**Product Overview** Full-length human CDK1 [1-297(end) amino acids of accession number NP\_001777.1] was co-expressed as N-terminal DYKDDDDK tagged, biotinylated protein (38 kDa) with His-CyclinA2 [1-432(end) amino acids of accession number NP\_001228.2] using baculovirus expression system. The protein was purified by using DYKDDDDK tag antibody agarose.

**Species** Human

**Source** Sf21 Cells

**ProteinLength** 1-297(end)

**Form** 50 mM Tris-HCl, 150 mM NaCl, 0.05% Brij35, 1 mM DTT, 10% glycerol, pH7.5

**Bio-activity** The activity was measured by off-chip mobility shift assay(MSA). The enzyme was incubated with fluorescence-labeled substrate and Mg(or Mn)/ATP. The phosphorylated and unphosphorylated substrates were separated and detected by MSA device.

**Purity** 90%

**Applications** SDS-PAGE

**Storage** Store at -80C. Avoid repeating freeze-thaws.

 Tel: 1-631-559-9269 1-516-512-3133

 Email: [info@creative-biomart.com](mailto:info@creative-biomart.com)  Fax: 1-631-938-8127

 45-1 Ramsey Road, Shirley, NY 11967, USA

**Conjugation**                      Biotin

## GENE INFORMATION

**Gene Name**                      cyclin-dependent kinase 1

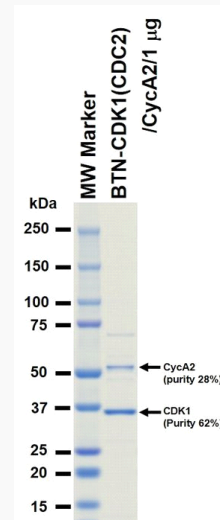
**Official Symbol**                CDK1

**Synonyms**                      CDK1; CDC2; CDC28A; P34CDC2

**Protein Refseq**                [NP\\_001777.1](#)

**UniProt ID**                      [P06493](#)

## SDS-PAGE



The purity was assessed by SDS-PAGE/CBB staining.

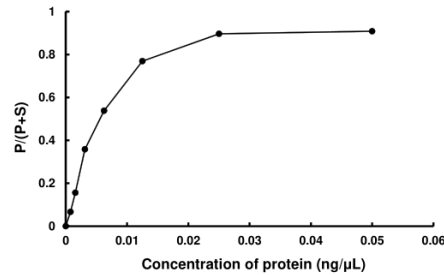
 Tel: 1-631-559-9269    1-516-512-3133

 Email: [info@creative-biomart.com](mailto:info@creative-biomart.com)     Fax: 1-631-938-8127

 45-1 Ramsey Road, Shirley, NY 11967, USA

Activity data

Activity data



The activity was measured by off-chip mobility shift assay(MSA). The enzyme was incubated with fluorescence-labeled substrate and Mg(or Mn)/ATP. The phosphorylated and unphosphorylated substrates were separated and detected by MSA device.

Tel: 1-631-559-9269 1-516-512-3133

Email: [info@creative-biomart.com](mailto:info@creative-biomart.com) Fax: 1-631-938-8127

45-1 Ramsey Road, Shirley, NY 11967, USA