

## Recombinant Human CDK1 protein, His-tagged

**Cat. No.** CDK1-653H    **Lot. No.** (See product label)

### SPECIFICATION

<b>Product Overview</b>	Recombinant Human CDK1 protein is produced by E. coli-derived, PET28a expression system. This protein is fused with a His tag at the N-terminal.
<b>Species</b>	Human
<b>Source</b>	E.coli
<b>ProteinLength</b>	1-297 aa
<b>Form</b>	The purified protein was Lyophilized from sterile PBS (58 mM Na <sub>2</sub> HPO <sub>4</sub> , 17 mM NaH <sub>2</sub> PO <sub>4</sub> , 68 mM NaCl, pH7.0). 5 % trehalose and 5 % mannitol are added as protectants before lyophilization.
<b>AA Sequence</b>	MEDYTKIEKIGEGTYGVVYKGRHKTTGQVVAMKKIRLESEEEGVPSTAIRESLLKEL RHPNIVSLQDVLMQDSRLYLIFEFLSMDLKKYLD SIPPQYMDSSLVKS YLYQILQGIV FCHSRRVLHRDLKPQNLLIDDKGTIKLADFGLARAFGIPIRVYTHEVVTLWYRSPEVLL GSARYSTPVDIWSIGTIFAELATKKPLFHGDSEIDQLFRIFRALGTPNNEVWPEVESL QDYKNTFPKWKPGSLASHVKNLDENGLDLLSKMLIYDPAKRISGKMALNHPYFNLDL NQIKKM
<b>Purity</b>	> 95%, by SDS-PAGE with Coomassie Brilliant Blue staining.
<b>Stability</b>	Samples are stable for up to twelve months from date of receipt at -70 centigrade.
<b>Storage</b>	Store it under sterile conditions at -20 centigrade to -80 centigrade. It is

 Tel: 1-631-559-9269    1-516-512-3133

 Email: [info@creative-biomart.com](mailto:info@creative-biomart.com)     Fax: 1-631-938-8127

 45-1 Ramsey Road, Shirley, NY 11967, USA

recommended that the protein be aliquoted for optimal storage. Avoid repeated freeze-thaw cycles.

**Reconstitution**

It is recommended that sterile water be added to the vial to prepare a stock solution of 0.2 ug/ul. Centrifuge the vial at 4°C before opening to recover the entire contents.

**Shipping**

The product is shipped at ambient temperature. Upon receipt, store it immediately at the recommended temperature.

## GENE INFORMATION

**Gene Name**

CDK1 cyclin-dependent kinase 1 [ Homo sapiens ]

**Official Symbol**

CDK1

**Synonyms**

CDK1; cyclin-dependent kinase 1; CDC28A; p34 protein kinase; cell cycle controller CDC2; CDC2; P34CDC2; MGC111195; DKFZp686L20222;

**Gene ID**

983

**mRNA Refseq**

NM\_001170406

**Protein Refseq**

NP\_001163877

**MIM**

116940

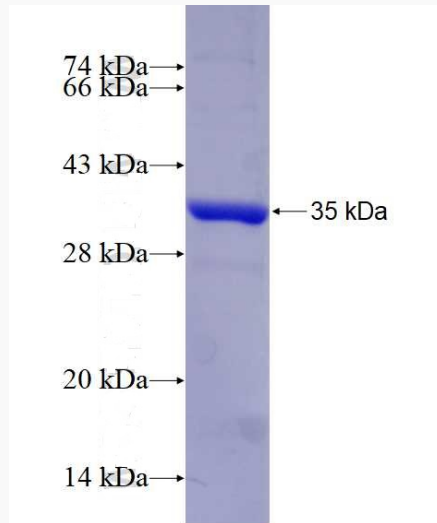
**UniProt ID**

P06493

 Tel: 1-631-559-9269 1-516-512-3133

 Email: [info@creative-biomart.com](mailto:info@creative-biomart.com)  Fax: 1-631-938-8127

 45-1 Ramsey Road, Shirley, NY 11967, USA



 Tel: 1-631-559-9269 1-516-512-3133

 Email: [info@creative-biomart.com](mailto:info@creative-biomart.com)  Fax: 1-631-938-8127

 45-1 Ramsey Road, Shirley, NY 11967, USA