

## Recombinant Human CDK11A Protein, GST-Tagged

Cat. No. CDK11A-0922H Lot. No. (See product label)

### SPECIFICATION

<b>Product Overview</b>	Human CDK11A partial ORF (NP_277073, 681 a.a. - 780 a.a.) recombinant protein with GST-tag at N-terminal.
<b>Species</b>	Human
<b>Source</b>	Wheat Germ
<b>Description</b>	This gene encodes a member of the serine/threonine protein kinase family. Members of this kinase family are known to be essential for eukaryotic cell cycle control. Due to a segmental duplication, this gene shares very high sequence identity with a neighboring gene. These two genes are frequently deleted or altered in neuroblastoma. The protein kinase encoded by this gene can be cleaved by caspases and may play a role in cell apoptosis. Alternative splicing results in multiple transcript variants. [provided by RefSeq, Sep 2015]
<b>Molecular Mass</b>	36.63 kDa
<b>AA Sequence</b>	GFDLMNKFLTYFPGRRISAEDGLKHEYFRETPLPIDPSMFPTWPAKSEQQRVKRGT SPRPPEGGLGYSQLGDDDLKETGFHLTTTNQGASAAGPGFSLKF
<b>Applications</b>	Enzyme-linked Immunoabsorbent Assay Western Blot (Recombinant protein) Antibody Production Protein Array

 Tel: 1-631-559-9269 1-516-512-3133

 Email: [info@creative-biomart.com](mailto:info@creative-biomart.com)  Fax: 1-631-938-8127

 45-1 Ramsey Road, Shirley, NY 11967, USA

<b>Storage</b>	Store at -80 centigrade. Aliquot to avoid repeated freezing and thawing.
<b>Storage Buffer</b>	50 mM Tris-HCl, 10 mM reduced Glutathione, pH=8.0 in the elution buffer.
<b>GENE INFORMATION</b>	
<b>Gene Name</b>	CDK11A cyclin dependent kinase 11A [ Homo sapiens (human) ]
<b>Official Symbol</b>	CDK11A
<b>Synonyms</b>	CDK11A; cyclin dependent kinase 11A; CDC2L2; cell division cycle 2-like 2 (PITSLRE proteins); CDC2L2, CDC2L3, cell division cycle 2 like 2, cell division cycle 2 like 2 (PITSLRE proteins); cell division cycle 2-like 2; CDK11 p46; CDK11 p58; CDK11 p110; p58GTA; PITSLRE; CDC2L3; CDK11-p46; CDK11-p58; CDK11-p110; MGC131975; cyclin-dependent kinase 11A; PITSLRE B; PITSLRE protein kinase beta SV1 isoform; PITSLRE protein kinase beta SV16 isoform; PITSLRE protein kinase beta SV17 isoform; PITSLRE protein kinase beta SV18 isoform; PITSLRE protein kinase beta SV2 isoform; PITSLRE protein kinase beta SV3 isoform; PITSLRE protein kinase beta SV6 isoform; PITSLRE serine/threonine-protein kinase CDC2L2; cell division cycle 2-like 2 (PITSLRE proteins); cell division cycle 2-like protein kinase 2; cell division protein kinase 11A; galactosyltransferase-associated protein kinase p58/GTA; EC 2.7.11.22
<b>Gene ID</b>	728642
<b>mRNA Refseq</b>	NM_001313896
<b>Protein Refseq</b>	NP_001300825
<b>MIM</b>	116951

 Tel: 1-631-559-9269 1-516-512-3133

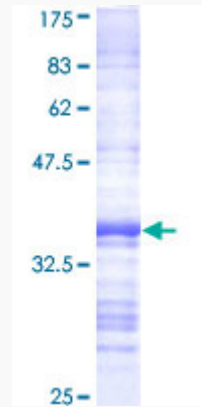
 Email: [info@creative-biomart.com](mailto:info@creative-biomart.com)  Fax: 1-631-938-8127

 45-1 Ramsey Road, Shirley, NY 11967, USA

UniProt ID

Q9UQ88

Quality Control  
Testing



12.5% SDS-PAGE Stained with Coomassie Blue.

 Tel: 1-631-559-9269 1-516-512-3133

 Email: [info@creative-biomart.com](mailto:info@creative-biomart.com)  Fax: 1-631-938-8127

 45-1 Ramsey Road, Shirley, NY 11967, USA