

## Recombinant Human CDK11B Protein, His-tagged

Cat. No. CDK11B-723H Lot. No. (See product label)

### SPECIFICATION

<b>Product Overview</b>	Recombinant Human CDK11B Protein (Phe438-Arg724) with His tag was expressed in E. coli.
<b>Species</b>	Human
<b>Source</b>	E.coli
<b>ProteinLength</b>	Phe438-Arg724
<b>Description</b>	This gene encodes a member of the serine/threonine protein kinase family. Members of this kinase family are known to be essential for eukaryotic cell cycle control. Due to a segmental duplication, this gene shares very high sequence identity with a neighboring gene. These two genes are frequently deleted or altered in neuroblastoma. The protein kinase encoded by this gene can be cleaved by caspases and may play a role in cell apoptosis. Alternative splicing results in multiple transcript variants.
<b>Form</b>	Freeze-dried powder
<b>Molecular Mass</b>	Predicted Molecular Mass: 36.7 kDa; Accurate Molecular Mass: 37 kDa
<b>Purity</b>	> 95%
<b>Applications</b>	Positive Control; Immunogen; SDS-PAGE; WB.

 Tel: 1-631-559-9269 1-516-512-3133

 Email: [info@creative-biomart.com](mailto:info@creative-biomart.com)  Fax: 1-631-938-8127

 45-1 Ramsey Road, Shirley, NY 11967, USA

<b>Stability</b>	The thermal stability is described by the loss rate. The loss rate was determined by accelerated thermal degradation test, that is, incubate the protein at 37 centigrade for 48h, and no obvious degradation and precipitation were observed. The loss rate is less than 5% within the expiration date under appropriate storage condition.
<b>Storage</b>	Avoid repeated freeze/thaw cycles. Store at 2-8 centigrade for one month. Aliquot and store at -80 centigrade for 12 months.
<b>Storage Buffer</b>	PBS, pH7.4, containing 0.01% SKL, 1mM DTT, 5% Trehalose and Proclin300.
<b>Reconstitution</b>	Reconstitute in 10mM PBS (pH7.4) to a concentration of 0.1-1.0 mg/mL. Do not vortex.

## GENE INFORMATION

<b>Gene Name</b>	CDK11B cyclin-dependent kinase 11B [ Homo sapiens (human) ]
<b>Official Symbol</b>	CDK11B
<b>Synonyms</b>	CDK11B; cyclin-dependent kinase 11B; CDC2L1, cell division cycle 2 like 1 (PITSLRE proteins); CDK11 p46; CDK11 p58; CDK11 p110; PITSLREA; p58 CLK-1; CDC-related protein kinase p58; cell division protein kinase 11B; cell division cycle 2-like protein kinase 1; PITSLRE serine/threonine-protein kinase CDC2L1; cell division cycle 2-like 1 (PITSLRE proteins); galactosyltransferase-associated protein kinase p58/GTA; p58; PK58; CDK11; CLK-1; CDC2L1; p58CLK-1; CDK11-p46; CDK11-p58; p58CDC2L1; CDK11-p110; FLJ59152;
<b>Gene ID</b>	984
<b>mRNA Refseq</b>	NM_033486

 Tel: 1-631-559-9269 1-516-512-3133

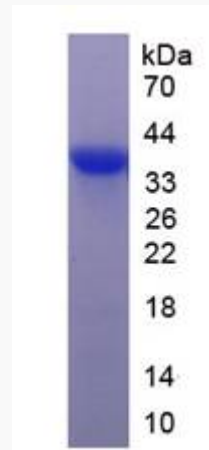
 Email: [info@creative-biomart.com](mailto:info@creative-biomart.com)  Fax: 1-631-938-8127

 45-1 Ramsey Road, Shirley, NY 11967, USA

**Protein Refseq**      NP\_277021

**MIM**                    176873

**UniProt ID**            P21127



 Tel: 1-631-559-9269    1-516-512-3133

 Email: [info@creative-biomart.com](mailto:info@creative-biomart.com)     Fax: 1-631-938-8127

 45-1 Ramsey Road, Shirley, NY 11967, USA