

Recombinant Human CDK12 protein, GST-tagged

Cat. No. CDK12-16H Lot. No. (See product label)

SPECIFICATION

Product Overview	Recombinant Human CDK12(658-end) fused with GST tag at N-terminal was expressed in Insect cells.
Species	Human
Source	Insect Cells
ProteinLength	658-end a.a.
Form	50mM Tris-HCl, pH 7.5, 150mM NaCl, 10mM glutathione, 0.1mM EDTA, 0.25mM DTT, 0.1mM PMSF, 25% glycerol.
Molecular Mass	~135kDa
Purity	> 70%
Applications	Western Blot
Stability	1 year at -70 centigrade from the date of shipment
Storage	Store product at -70 centigrade. For optimal storage, aliquot target into smaller quantities after centrifugation and store at recommended temperature. For most favorable performance, avoid repeated handling and multiple freeze/thaw cycles.
Concentration	0.5µg/µl

 Tel: 1-631-559-9269 1-516-512-3133

 Email: info@creative-biomart.com  Fax: 1-631-938-8127

 45-1 Ramsey Road, Shirley, NY 11967, USA

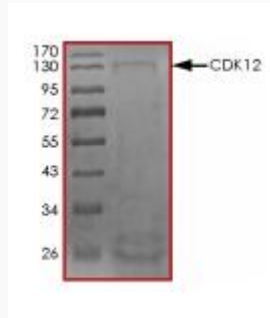
GENE INFORMATION

Gene Name	CDK12 cyclin-dependent kinase 12 [Homo sapiens]
Official Symbol	CDK12
Synonyms	CDK12; cyclin-dependent kinase 12; Cdc2 related kinase, arginine/serine rich , CRKRS; CDC2 related protein kinase 7; CRK7; CRKR; KIAA0904; CDC2-related protein kinase 7; cell division protein kinase 12; Cdc2-related kinase, arginine/serine-rich; cell division cycle 2-related protein kinase 7; CRKRS; hCDK12;
Gene ID	51755
mRNA Refseq	NM_016507
Protein Refseq	NP_057591
UniProt ID	Q9NYV4
Chromosome Location	17q12
Function	ATP binding; RNA polymerase II carboxy-terminal domain kinase activity; cyclin binding; cyclin-dependent protein kinase activity; nucleotide binding; protein binding; protein kinase activity;

 Tel: 1-631-559-9269 1-516-512-3133

 Email: info@creative-biomart.com  Fax: 1-631-938-8127

 45-1 Ramsey Road, Shirley, NY 11967, USA



Tel: 1-631-559-9269 1-516-512-3133

Email: info@creative-biomart.com Fax: 1-631-938-8127

45-1 Ramsey Road, Shirley, NY 11967, USA