

Recombinant Human CDK12 Protein, GST-tagged

Cat. No. CDK12-1888H Lot. No. (See product label)

SPECIFICATION

Product Overview	Human CRK7 partial ORF (NP_057591, 1281 a.a. - 1380 a.a.) recombinant protein with GST-tag at N-terminal.
Species	Human
Source	Wheat Germ
Description	CDK12 (Cyclin Dependent Kinase 12) is a Protein Coding gene. Among its related pathways are Gene Expression and DNA Damage. GO annotations related to this gene include transferase activity, transferring phosphorus-containing groups and protein tyrosine kinase activity. An important paralog of this gene is CDK13.
Molecular Mass	36.63 kDa
AA Sequence	LVEGDLSSAPQELNPAVTAALLQLLSQPEAEPPGHLPHEHQALRPMYSTRPRPNR TYGNTDGPETGFSAIDTDERNNSGPALTESLVQTLVKNRTFSGSL
Applications	Enzyme-linked Immunoabsorbent Assay Western Blot (Recombinant protein) Antibody Production Protein Array
Notes	Best use within three months from the date of receipt of this protein.
Storage	Store at -80 centigrade. Aliquot to avoid repeated freezing and thawing.

 Tel: 1-631-559-9269 1-516-512-3133

 Email: info@creative-biomart.com  Fax: 1-631-938-8127

 45-1 Ramsey Road, Shirley, NY 11967, USA

Storage Buffer 50 mM Tris-HCl, 10 mM reduced Glutathione, pH=8.0 in the elution buffer.

GENE INFORMATION

Gene Name CDK12 cyclin-dependent kinase 12 [Homo sapiens]

Official Symbol CDK12

Synonyms CDK12; cyclin-dependent kinase 12; Cdc2 related kinase, arginine/serine rich , CRKRS; CDC2 related protein kinase 7; CRK7; CRKR; KIAA0904; CDC2-related protein kinase 7; cell division protein kinase 12; Cdc2-related kinase, arginine/serine-rich; cell division cycle 2-related protein kinase 7; CRKRS; hCDK12;

Gene ID 51755

mRNA Refseq NM_015083

Protein Refseq NP_055898

MIM 615514

UniProt ID Q9NYV4

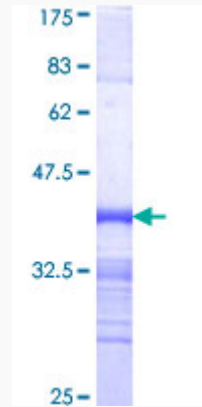
 Tel: 1-631-559-9269 1-516-512-3133

 Email: info@creative-biomart.com  Fax: 1-631-938-8127

 45-1 Ramsey Road, Shirley, NY 11967, USA

Quality Control

Testing:



12.5% SDS-PAGE Stained with Coomassie Blue.

 Tel: 1-631-559-9269 1-516-512-3133

 Email: info@creative-biomart.com  Fax: 1-631-938-8127

 45-1 Ramsey Road, Shirley, NY 11967, USA