

Recombinant Human CDK13 Protein, His-tagged

Cat. No. CDK13-724H Lot. No. (See product label)

SPECIFICATION

Product Overview	Recombinant Human CDK13 Protein (Phe705-Leu998) with His tag was expressed in E. coli.
Species	Human
Source	E.coli
ProteinLength	Phe705-Leu998
Description	The protein encoded by this gene is a member of the cyclin-dependent serine/threonine protein kinase family. Members of this family are well known for their essential roles as master switches in cell cycle control. The exact function of this protein has not yet been determined, but it may play a role in mRNA processing and may be involved in regulation of hematopoiesis. Alternatively spliced transcript variants have been described.
Form	Freeze-dried powder
Molecular Mass	Predicted Molecular Mass: 37.8 kDa; Accurate Molecular Mass: 38 kDa
Purity	> 90%
Applications	Positive Control; Immunogen; SDS-PAGE; WB.
Stability	The thermal stability is described by the loss rate. The loss rate was determined by

 Tel: 1-631-559-9269 1-516-512-3133

 Email: info@creative-biomart.com  Fax: 1-631-938-8127

 45-1 Ramsey Road, Shirley, NY 11967, USA

accelerated thermal degradation test, that is, incubate the protein at 37 centigrade for 48h, and no obvious degradation and precipitation were observed. The loss rate is less than 5% within the expiration date under appropriate storage condition.

Storage

Avoid repeated freeze/thaw cycles. Store at 2-8 centigrade for one month. Aliquot and store at -80 centigrade for 12 months.

Storage Buffer

PBS, pH7.4, containing 0.01% SKL, 1mM DTT, 5% Trehalose and Proclin300.

Reconstitution

Reconstitute in 20mM Tris, 150mM NaCl (pH8.0) to a concentration of 0.1-1.0 mg/mL. Do not vortex.

GENE INFORMATION

Gene Name

CDK13 cyclin-dependent kinase 13 [Homo sapiens (human)]

Official Symbol

CDK13

Synonyms

CDK13; cyclin-dependent kinase 13; CDC2L5, cell division cycle 2 like 5 (cholinesterase related cell division controller); CDC2L; CHED; cholinesterase related cell division controller; KIAA1791; CDC2-related protein kinase 5; cell division protein kinase 13; cell division cycle 2-like protein kinase 5; cholinesterase-related cell division controller; CDC2L5; hCDK13; FLJ35215;

Gene ID

8621

mRNA Refseq

NM_003718

Protein Refseq

NP_003709

MIM

603309

 Tel: 1-631-559-9269 1-516-512-3133

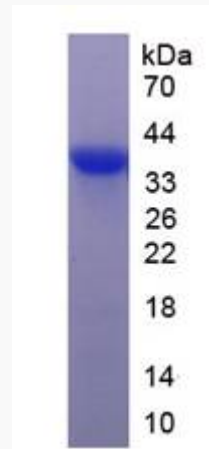
 Email: info@creative-biomart.com  Fax: 1-631-938-8127

 45-1 Ramsey Road, Shirley, NY 11967, USA



UniProt ID

Q14004



Tel: 1-631-559-9269 1-516-512-3133

Email: info@creative-biomart.com Fax: 1-631-938-8127

45-1 Ramsey Road, Shirley, NY 11967, USA